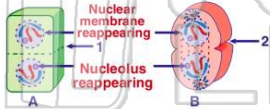
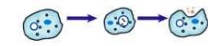
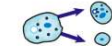

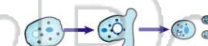




Name \_\_\_\_\_ Class \_\_\_\_\_ Date \_\_\_\_\_

- 1 Which **two processes** are involved in **mitotic cell division**?
- A nuclear duplication and cytoplasmic division
  - B nuclear duplication and cytoplasmic duplication
  - C spermatogenesis and cytoplasmic duplication
  - D oogenesis and cytoplasmic division

- 3 Which **processes** occur in regions **1** and **2** in these cells?
- 
- A synthesis of a cell plate at 1, pinching in of the cell membrane at 2
  - B pinching in of the cell membrane at 1, synthesis of a cell plate at 2
  - C replication of a chromatid at 1, nuclear membrane reappearing at 2
  - D synthesis of a cell plate at 1, nuclear membrane reappearing at 2

- 2 Which diagram best shows the process of **binary fission in an amoeba**?
- A 
  - B 
  - C 
  - D 

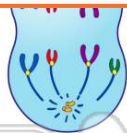
- 4 The ability of cells to **pass on their characteristics** to new cells is most directly related to the ability of
- A cytoplasm to excrete wastes
  - B effectors to respond to environmental changes
  - C ribosomes to use energy
  - D mitochondria to produce energy



## PREVIEW


Please [Sign In](#) or [Sign Up](#) to download the printable version of this worksheet

- 7
- A paired chromosomes
  - B centrioles
  - C cell plate
  - D endoplasmic reticulum



- B nucleoli disappear
- C centrioles migrate
- D chromosome pairs separate from each other

- 9 Which statement is true of **both mitosis** and **meiosis**?
- A Both are involved in asexual reproduction.
  - B Both occur only in reproductive cells.
  - C The number of chromosomes is reduced by half.
  - D DNA replication occurs before the division of the nucleus.

- 10 Which phrase best describes a **process represented** in the diagram below?
- 
- A a zygote dividing by mitosis
  - B a zygote dividing by meiosis
  - C a gamete dividing by mitosis
  - D a gamete dividing by meiosis



## ANSWER KEY

Which **two processes** are involved in **mitotic cell division**?

- A** nuclear duplication and cytoplasmic division
- B** nuclear duplication and cytoplasmic duplication
- C** spermatogenesis and cytoplasmic duplication
- D** oogenesis and cytoplasmic division

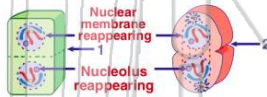
(a)

Which diagram best shows the process of **binary fission in an amoeba**?

- A**
- B**
- C**
- D**

(c)

Which **processes** occur in regions **1** and **2** in these cells?



- A** synthesis of a cell plate at 1, pinching in of the cell membrane at 2
- B** pinching in of the cell membrane at 1, synthesis of a cell plate at 2
- C** replication of a chromatid at 1, nuclear membrane forming at 2
- D** spindle apparatus attaching to the cell

(a)

The ability of cells to **pass on their characteristics** to new cells is most directly related to the ability of

- A** cytoplasm to excrete wastes
- B** effectors to respond to environmental changes
- C** ribosomes to use energy
- D** chromosomes to replicate

(d)



## PREVIEW

Please [Sign In](#) or [Sign Up](#) to download the printable version of this worksheet

- C** cell plate
- D** endoplasmic reticulum



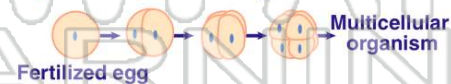
- C** centrioles migrate
- D** chromosome pairs separate from each other

Which statement is true of **both mitosis** and **meiosis**?

- A** Both are involved in asexual reproduction.
- B** Both occur only in reproductive cells.
- C** The number of chromosomes is reduced by half.
- D** DNA replication occurs before the division of the nucleus.

(d)

Which phrase best describes a **process represented** in the diagram below?



- A** a zygote dividing by mitosis
- B** a zygote dividing by meiosis
- C** a gamete dividing by mitosis
- D** a gamete dividing by meiosis

(a)