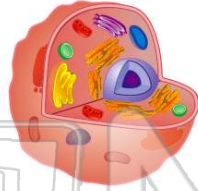




Name _____ Class _____ Date _____

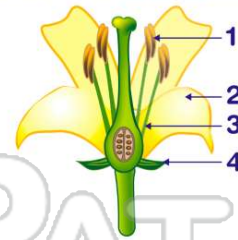
1 Compared to the number of **chromosomes** contained in a body cell of a parent, how many **chromosomes** would normally be contained in a **gamete**?

- A the same number
- B twice as many
- C one-fourth as many
- D half as many

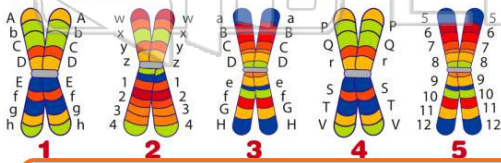


2 The diagram below shows parts of a flower. In which structure does **meiosis** occur?

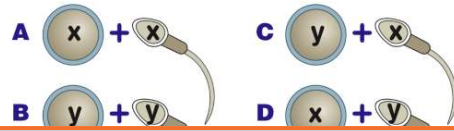
- A 1
- B 2
- C 3
- D 4



3 Which **chromosomes** shown below are **homologous**?



4 Which diagram correctly illustrates the fusion of **normal gametes** that will most likely produce a **human male**?



PREVIEW

Please [Sign In](#) or [Sign Up](#) to download the printable version of this worksheet

- A stable gene frequencies
- B chromosomal mutations
- C slow environmental changes
- D asexual reproduction



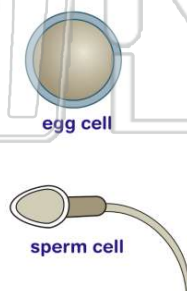
- B hemophilia
- C Tay-Sachs
- D phenylketonuria



9 The diagram represents **two human cells**.

These cells are a **direct result of**

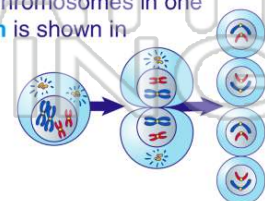
- A mitotic cell division
- B sex linkage
- C fertilization
- D gametogenesis



10 The distribution of chromosomes in one type of **cell division** is shown in the diagram.

Which process is represented in the diagram?

- A asexual reproduction
- B meiosis
- C mitosis
- D vegetative propagation

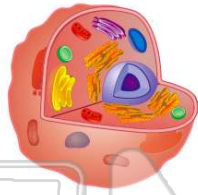




ANSWER KEY

Compared to the number of **chromosomes** contained in a body cell of a parent, how many **chromosomes** would normally be contained in a **gamete**?

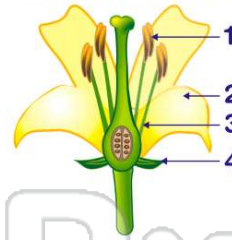
- A the same number
- B twice as many
- C one-fourth as many
- D half as many



(d)

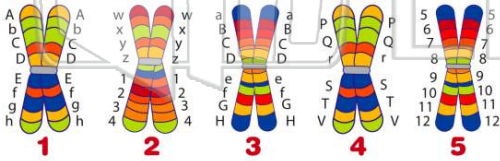
The diagram below shows parts of a flower. In which structure does **meiosis** occur?

- A 1
- B 2
- C 3
- D 4



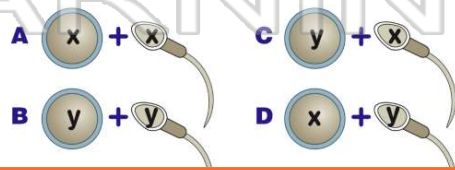
(a)

Which **chromosomes** shown below are **homologous**?



(c)

Which diagram correctly illustrates the fusion of **normal gametes** that will most likely produce a **human male**?



(d)

- A 1 and 2
- C 3 and 1



PREVIEW

Please [Sign In](#) or [Sign Up](#) to download the printable version of this worksheet

- A stable gene frequencies
- B chromosomal mutations
- C slow environmental changes
- D asexual reproduction

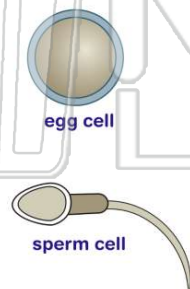


- C Tay-Sachs
- D phenylketonuria

The diagram represents **two human cells**.

These cells are a **direct result of**

- A mitotic cell division
- B sex linkage
- C fertilization
- D gametogenesis

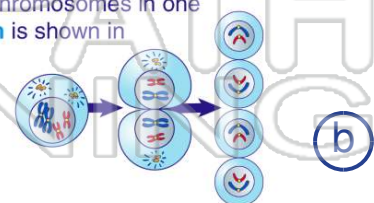


(d)

The distribution of chromosomes in one type of **cell division** is shown in the diagram.

Which process is represented in the diagram?

- A asexual reproduction
- B meiosis
- C mitosis
- D vegetative propagation



(b)