

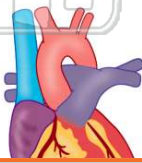


Name _____ Class _____ Date _____

- 1 Which function of **human blood** includes the other three?
- A transporting nutrients
 - B transporting oxygen
 - C collecting wastes
 - D maintaining homeostasis

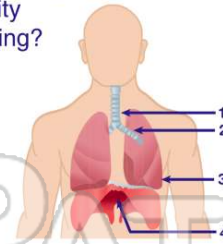


- 3 To determine **heart rate**, a student should count the pulsations per minute in
- A a vein
 - B a capillary
 - C an artery
 - D a lymph vessel



- 2 Which **structure** shown in the diagram below **contracts**, causing a **pressure change** in the chest cavity during breathing?

- A 1
- B 2
- C 3
- D 4



- 4 What is the main function of a **nephron**?

- A It breaks down red blood cells to form nitrogenous wastes.
- B It regulates the chemical composition of the blood.
- C It forms urea from the waste products of protein metabolism.

5



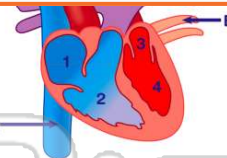
PREVIEW

Please [Sign In](#) or [Sign Up](#) to download the printable version of this worksheet

7

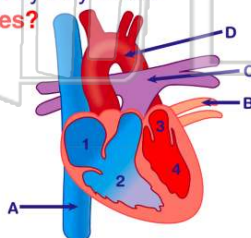
- C skeletal muscle and bones
- D cardiac muscle and immovable joints

- C C
- D D



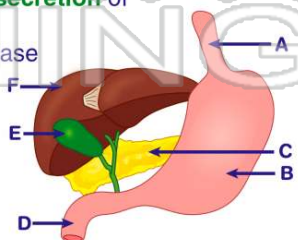
- 9 Which heart chamber pumps blood **toward the alveoli** by way of the **pulmonary arteries**?

- A 1
- B 2
- C 3
- D 4



- 10 A digestive function of **organ C** is the **synthesis** and **secretion** of

- A salivary amylase
- B protease
- C hydrochloric acid
- D bile

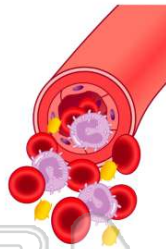




ANSWER KEY

Which function of **human blood** includes the other three?

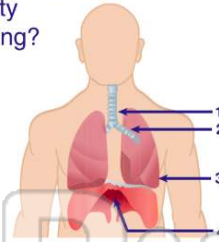
- A** transporting nutrients
- B** transporting oxygen
- C** collecting wastes
- D** maintaining homeostasis



(d)

Which **structure** shown in the diagram below **contracts**, causing a **pressure change** in the chest cavity during breathing?

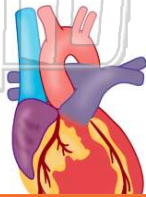
- A** 1
- B** 2
- C** 3
- D** 4



(d)

To determine **heart rate**, a student should count the pulsations per minute in

- A** a vein
- B** a capillary
- C** an artery
- D** a lymph vessel



(c)

What is the main function of a **nephron**?

- A** It breaks down red blood cells to form nitrogenous wastes.
- B** It regulates the chemical composition of the blood.
- C** It forms urea from the waste products of protein metabolism.
- D** It absorbs digested food from the contents of the small intestine

(b)

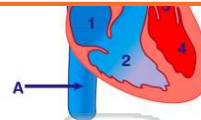


PREVIEW

Please [Sign In](#) or [Sign Up](#) to download the printable version of this worksheet

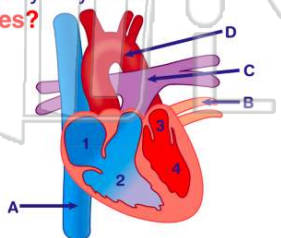
D cardiac muscle and immovable joints

D D



Which heart chamber pumps blood **toward the alveoli** by way of the **pulmonary arteries**?

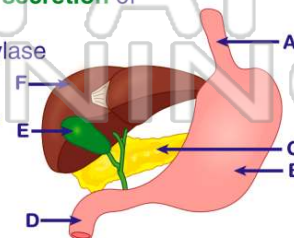
- A** 1
- B** 2
- C** 3
- D** 4



(b)

A digestive function of **organ C** is the **synthesis** and **secretion** of

- A** salivary amylase
- B** protease
- C** hydrochloric acid
- D** bile



(b)