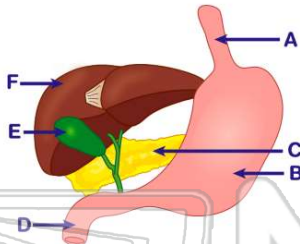




Name \_\_\_\_\_ Class \_\_\_\_\_ Date \_\_\_\_\_

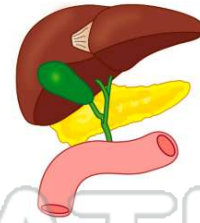
1 **Peristalsis** occurs in structures

- A A and D
- B B and C
- C C and E
- D E and F



2 Which **hormone stimulates** the release of sugar from the liver into the blood?

- A parathormone
- B insulin
- C glucagon
- D FSH



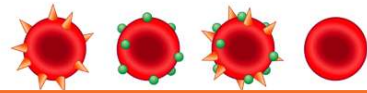
3 A person who is given an **injection containing only antibodies** would most likely develop

- A allergies
- B sickle-cell anemia
- C leukemia



4 If **only** the **ABO** group is considered, an individual with **type A** blood can safely receive a pint of blood from a donor whose genotype is

- A  $I^A I^B$
- B  $I^B i$



5

Vir  
d  
A  
E  
C  
D



## PREVIEW

Please [Sign In](#) or [Sign Up](#) to download the printable version of this worksheet

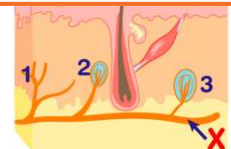
7

E  
c  
t

- A
- B chorion
- C yolk
- D allantois



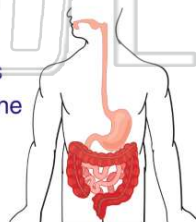
- A sensory nerve
- B an effector
- C a ganglion
- D a tympanum



9

In humans, structures that **absorb** most of the products of **digestion** are the

- A ducts of the pancreas
- B cells of the esophagus
- C villi of the small intestine
- D muscular folds of the gallbladder



10

Which function is associated with **phagocytes** in the blood?

- A initiating blood clots
- B transporting dissolved nutrients
- C producing hormones
- D engulfing bacteria

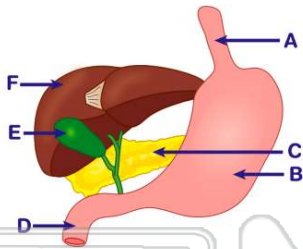




## ANSWER KEY

**Peristalsis** occurs in structures

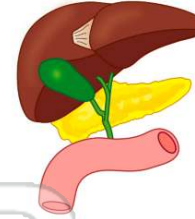
- A A and D
- B B and C
- C C and E
- D E and F



(a)

Which **hormone stimulates** the release of **sugar from the liver** into the blood?

- A parathormone
- B insulin
- C glucagon
- D FSH



(c)

A person who is given an **injection containing only antibodies** would most likely develop

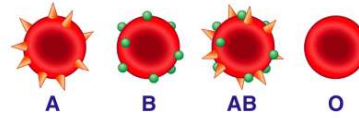
- A allergies
- B sickle-cell anemia
- C leukemia
- D passive immunity



(d)

If **only** the **ABO** group is considered, an individual with **type A blood** can safely receive a pint of blood from a donor whose genotype is

- A  $I^A I^B$
- B  $I^B i$
- C  $ii$
- D  $I^B I^B$



(c)



## PREVIEW

Please [Sign In](#) or [Sign Up](#) to download the printable version of this worksheet

- C yolk
- D allantois



- B an effector
- C a ganglion
- D a tympanum



In humans, structures that **absorb** most of the products of **digestion** are the

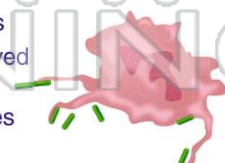
- A ducts of the pancreas
- B cells of the esophagus
- C villi of the small intestine
- D muscular folds of the gallbladder



(c)

Which function is associated with **phagocytes** in the blood?

- A initiating blood clots
- B transporting dissolved nutrients
- C producing hormones
- D engulfing bacteria



(d)