



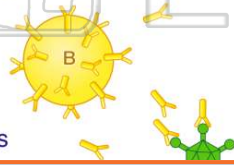
Name _____ Class _____ Date _____

1 Which activity would stimulate the **human immune system** to provide protection against an invasion by a microbe?

- A receiving antibiotic injections after surgery
- B choosing a well-balanced diet and following it throughout life
- C being vaccinated against chicken pox
- D receiving hormones contained in mother's milk while nursing

3 Many **vaccinations stimulate** the **immune system** by exposing it to

- A antibodies
- B enzymes
- C mutated genes
- D weakened microbes

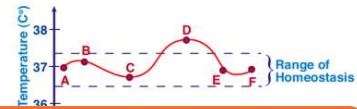


2 Certain **microbes**, **foreign tissues**, and some **cancerous cells** can cause **immune responses** in the human body because all three contain

- A antigens
- B enzymes
- C fats
- D cytoplasm

4 The data in the graph below show evidence of disease in the human body. A **disruption in dynamic equilibrium** is indicated by the temperature change between points

- A A and B
- B B and C
- C C and D



5



PREVIEW

Please [Sign In](#) or [Sign Up](#) to download the printable version of this worksheet

7

- C a change in the method of cellular respiration
- D a change in the function of DNA

- B They may be produced in response to an antigen.
- C They are nonspecific, acting against any foreign substance in the body.
- D They may be produced by white blood cells.

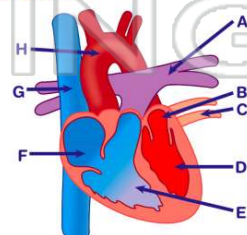
9

Which statement concerning **tanning** is correct?

- A Tanning causes a decrease in the ability of the skin to regulate body temperature.
- B Radiation from the Sun is the only radiation that causes tanning.
- C The production of melanin, which causes tanning, increases when skin cells are exposed to the Sun.
- D Melanocytes decrease their activity as exposure to the Sun increases, causing a protective coloration on the skin.

10 Which sequence represents part of the **normal pathway of blood**?

- A D→B→F→E→A
- B G→E→F→H→D
- C B→D→H→G→F
- D C→B→D→A→G





ANSWER KEY

Which activity would stimulate the **human immune system** to provide protection against an invasion by a microbe?

- A receiving antibiotic injections after surgery
- B choosing a well-balanced diet and following it throughout life
- C being vaccinated against chicken pox
- D receiving hormones contained in mother's milk while nursing

(C)

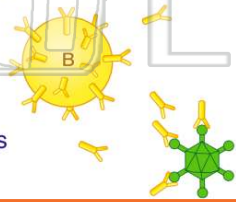
Certain **microbes**, **foreign tissues**, and some **cancerous cells** can cause **immune responses** in the human body because all three contain

- A antigens
- B enzymes
- C fats
- D cytoplasm

(a)

Many **vaccinations stimulate** the **immune system** by exposing it to

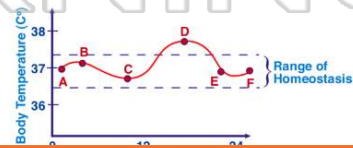
- A antibodies
- B enzymes
- C mutated genes
- D weakened microbes



(d)

The data in the graph below show evidence of disease in the human body. A **disruption in dynamic equilibrium** is indicated by the temperature change between points

- A A and B
- B B and C
- C C and D
- D E and F



(C)



PREVIEW

Please [Sign In](#) or [Sign Up](#) to download the printable version of this worksheet

- cellular respiration
- D a change in the function of DNA

- antigen.
- C They are nonspecific, acting against any foreign substance in the body.
- D They may be produced by white blood cells.

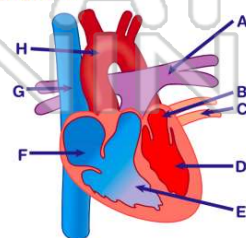
Which statement concerning **tanning** is correct?

- A Tanning causes a decrease in the ability of the skin to regulate body temperature.
- B Radiation from the Sun is the only radiation that causes tanning.
- C The production of melanin, which causes tanning, increases when skin cells are exposed to the Sun.
- D Melanocytes decrease their activity as exposure to the Sun increases, causing a protective coloration on the skin.

(C)

Which sequence represents part of the **normal pathway of blood**?

- A D→B→F→E→A
- B G→E→F→H→D
- C B→D→H→G→F
- D C→B→D→A→G



(C)