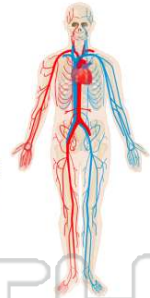




Name _____ Class _____ Date _____

- 1 The **immediate source** of the **intercellular fluid** surrounding all human body cells is
- A blood plasma
 - B enzymatic secretions
 - C lymphatic tissue
 - D glomerular filtrations

- 2 **Veins** are blood vessels that
- A deliver blood to the cells of the body
 - B contain striated muscle
 - C carry blood toward the heart
 - D readily exchange materials between the blood and body cells



- 3 Which statement concerning **gas transport** in humans is correct?
- A Carbon dioxide is transported to body cells by lymphocytes.
 - B Carbon dioxide is transported to body cells in the form of lactic acid.
 - C Oxygen is transported to body cells in the

- 4 Which type of **connective tissue** makes up the largest percentage of the endoskeleton of a human embryo?
- A bone
 - B cartilage
 - C tendons



PREVIEW

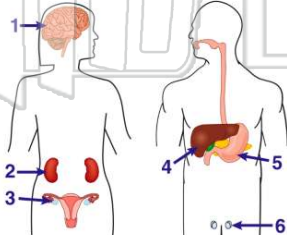
Please [Sign In](#) or [Sign Up](#) to download the printable version of this worksheet

- 7
- C stomach
 - D placenta



- C levels of specific hormones
- D heart rate

- 9 In which structures would the occurrence of **mutations** have the **greatest effect** on human evolution?
- A 1 and 3
 - B 2 and 5
 - C 3 and 6
 - D 4 and 6



- 10 The **human female reproductive system** is adapted for
- A production of zygotes in ovaries
 - B external fertilization of gametes
 - C production of milk for a developing embryo
 - D transport of oxygen through a placenta to a fetus



ANSWER KEY

The **immediate source** of the **intercellular fluid** surrounding all human body cells is

- A** blood plasma
- B** enzymatic secretions
- C** lymphatic tissue
- D** glomerular filtrations

(a)

Veins are blood vessels that

- A** deliver blood to the cells of the body
- B** contain striated muscle
- C** carry blood toward the heart
- D** readily exchange materials between the blood and body cells



(c)

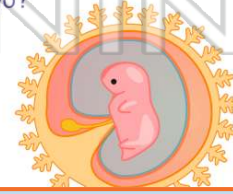
Which statement concerning **gas transport** in humans is correct?

- A** Carbon dioxide is transported to body cells by lymphocytes.
- B** Carbon dioxide is transported to body cells in the form of lactic acid.
- C** Oxygen is transported to body cells in the form of oxyhemoglobin.
- D** Oxygen is transported to body cells by

(c)

Which type of **connective tissue** makes up the largest percentage of the endoskeleton of a human embryo?

- A** bone
- B** cartilage
- C** tendons
- D** ligaments



(b)



PREVIEW

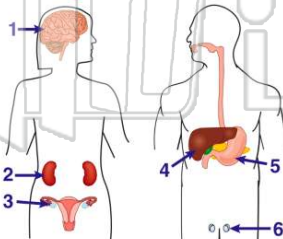
Please [Sign In](#) or [Sign Up](#) to download the printable version of this worksheet

D placenta

D heart rate

In which structures would the occurrence of **mutations** have the **greatest effect** on human evolution?

- A** 1 and 3
- B** 2 and 5
- C** 3 and 6
- D** 4 and 6



(c)

The **human female reproductive system** is adapted for

- A** production of zygotes in ovaries
- B** external fertilization of gametes
- C** production of milk for a developing embryo
- D** transport of oxygen through a placenta to a fetus

(d)