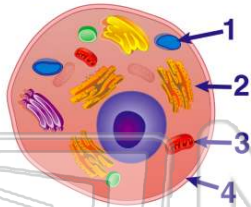




Name _____ Class _____ Date _____

1 Which organelle in the diagram below represents an **exception to the cell theory** because it contains genetic material and can reproduce within the cell?

- A 1
- B 2
- C 3
- D 4



2 Water is classified as an **inorganic compound** because it

- A does not contain nitrogen
- B does not contain carbon
- C contains hydrogen
- D contains oxygen



3 The series of diagrams below represents a **process** carried out by a **unicellular organism**.

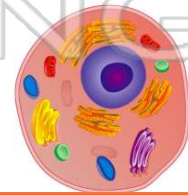
This process is known as

- A autotrophic nutrition
- B replication



4 Which activity is a **function** of all **living cells**?

- A synthesis
- B locomotion
- C anaerobic respiration
- D extracellular digestion



PREVIEW

Please [Sign In](#) or [Sign Up](#) to download the printable version of this worksheet

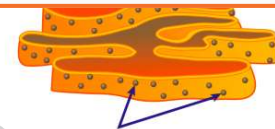
7

B Cells are the basic unit of function of living things.

C Cell parts such as chloroplasts are self replicating.

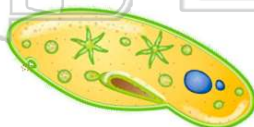
D Cells come from preexisting cells.

- reticulum
- C cell wall
- D ribosome



9 A **paramecium** eliminates **excess water** by means of

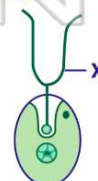
- A contractile vacuoles
- B lysosomes
- C an oral groove
- D a nucleolus



10 The diagram below represents a **unicellular green alga** known as **chlamydomonas**. **Structure X** helps chlamydomonas move through the pond in which it lives.

Structure X represents

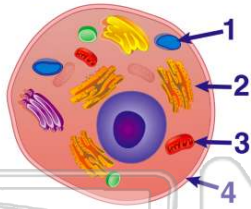
- A a seta
- B an antenna
- C a tentacle
- D a flagellum





ANSWER KEY

Which organelle in the diagram below represents an **exception to the cell theory** because it contains genetic material and can reproduce within the cell?



- A 1
- B 2
- C 3
- D 4

(C)

Water is classified as an **inorganic compound** because it



- A does not contain nitrogen
- B does not contain carbon
- C contains hydrogen
- D contains oxygen

(b)

The series of diagrams below represents a **process** carried out by a **unicellular organism**.

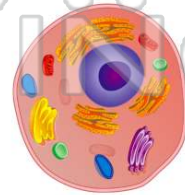
This process is known as



- A autotrophic nutrition
- B replication
- C phagocytosis
- D

(C)

Which activity is a **function** of all **living cells**?



- A synthesis
- B locomotion
- C anaerobic respiration
- D extracellular digestion

(a)

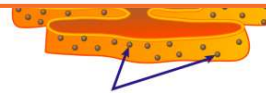


PREVIEW

Please [Sign In](#) or [Sign Up](#) to download the printable version of this worksheet

- C Cell parts such as chloroplasts are self replicating.
- D Cells come from preexisting cells.

- C cell wall
- D ribosome



A **paramecium** eliminates excess water by means of

- A contractile vacuoles
- B lysosomes
- C an oral groove
- D a nucleolus

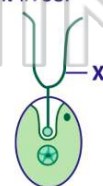


(a)

The diagram below represents a **unicellular green alga** known as **chlamydomonas**. **Structure X** helps chlamydomonas move through the pond in which it lives.

Structure X represents

- A a seta
- B an antenna
- C a tentacle
- D a flagellum



(d)