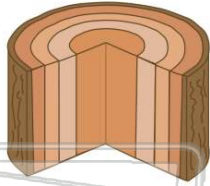




Name \_\_\_\_\_ Class \_\_\_\_\_ Date \_\_\_\_\_

1 Which **woody plant structure** possesses **vascular tissue** and **lenticels**?

- A root
- B seed
- C stem
- D flower



3 From **which part of the seed** will the leaves and upper portions of the stem of a plant develop?

- A hypocotyl
- B epicotyl
- C cotyledon



2 Plants produce substances that **regulate their growth patterns**. These substances are known as

- A pigments
- B auxins
- C tropisms
- D neurotransmitters



4 A tree produces only **seedless oranges**. A small branch cut from this tree produces roots after it is planted in soil. **When mature, this new tree** will most likely produce

- A oranges with seeds, only
- B oranges without seeds, only
- C a majority of oranges with seeds



5

M  
u  
p  
th  
a  
i  
A  
E  
C  
D



## PREVIEW

Please [Sign In](#) or [Sign Up](#) to download the printable version of this worksheet

7

V  
b

A

- E mitochondria
- C vacuole
- D cell wall



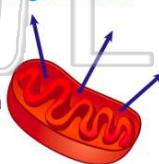
- B simple sugars
- C amino acids
- D minerals



9

The diagram below represents a **cell organelle** involved in the **transfer of energy** from organic compounds. **The arrows in the diagram could represent the release of**

- A ATP from a chloroplast carrying out photosynthesis
- B oxygen from a mitochondrion carrying out photosynthesis
- C glucose from a chloroplast carrying out respiration
- D carbon dioxide from a mitochondrion carrying out respiration



10

When **habitats** are destroyed, there are usually **fewer niches** for animals and plants. This action would most likely **not** lead to a change in the amount of

- A biodiversity
- B competition
- C interaction between species
- D solar radiation reaching the area

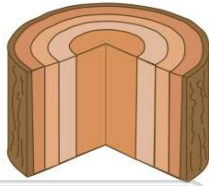




## ANSWER KEY

Which **woody plant structure** possesses **vascular tissue** and **lenticels**?

- A root
- B seed
- C stem
- D flower



(C)

Plants produce substances that **regulate their growth patterns**. These substances are known as

- A pigments
- B auxins
- C tropisms
- D neurotransmitters



(b)

From **which part of the seed** will the leaves and upper portions of the stem of a plant develop?

- A hypocotyl
- B epicotyl
- C cotyledon
- D seed coat



(b)

A tree produces only **seedless oranges**. A small branch cut from this tree produces roots after it is planted in soil. **When mature, this new tree will most likely produce**

- A oranges with seeds, only
- B oranges without seeds, only
- C a majority of oranges with seeds and only a few oranges without seeds



(b)



## PREVIEW

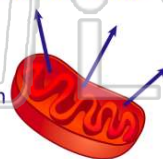
Please [Sign In](#) or [Sign Up](#) to download the printable version of this worksheet

D cell wall



The diagram below represents a **cell organelle** involved in the **transfer of energy** from organic compounds. **The arrows in the diagram could represent the release of**

- A ATP from a chloroplast carrying out photosynthesis
- B oxygen from a mitochondrion carrying out photosynthesis
- C glucose from a chloroplast carrying out respiration
- D carbon dioxide from a mitochondrion carrying out respiration



(d)

- C amino acids
- D minerals



When **habitats** are destroyed, there are usually **fewer niches** for animals and plants. This action would most likely **not** lead to a change in the amount of

- A biodiversity
- B competition
- C interaction between species
- D solar radiation reaching the area



(d)