



Name _____ Class _____ Date _____

1 An organism with **chitinous appendages** and **Malpighian tubules** most likely eliminates carbon dioxide through

- A spiracles
- B nephridia
- C antennae
- D tentacles

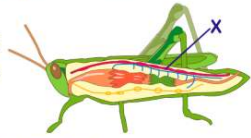
3 To observe the **aortic arches** of an earthworm, a student should use



- A an ultracentrifuge
- B a dissecting microscope
- C an electron microscope
- D a light microscope

2 A diagram of a **grasshopper dissection** is shown below.

Which statement best describes the location of **structure X**?



- A It is ventral to the nerve cord.
- B It is dorsal to the digestive tract.
- C It is anterior to the crop.
- D It is posterior to the anus.

4 The **absorption** and **circulation** of materials in a hydra are most similar to the absorption and circulation of materials in a

- A grasshopper
- B protozoan
- C human
- D amoeba



5



PREVIEW

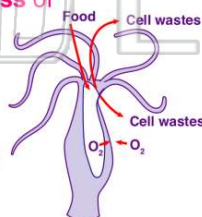
Please [Sign In](#) or [Sign Up](#) to download the printable version of this worksheet

7



9 The **movement of gases** indicated by the **arrows** in the diagram below of a hydra, takes place by the **process of**

- A pinocytosis
- B diffusion
- C active transport
- D dehydration synthesis



10 In certain invertebrates, the function of **Malpighian tubules** and **nephridia** is to

- A collect waste materials
- B carry oxygen
- C transmit nerve impulses
- D synthesize proteins





ANSWER KEY

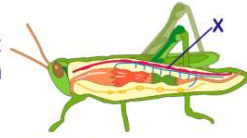
An organism with **chitinous appendages** and **Malpighian tubules** most likely eliminates carbon dioxide through

- A** spiracles
- B** nephridia
- C** antennae
- D** tentacles

(a)

A diagram of a **grasshopper dissection** is shown below.

Which statement best describes the location of **structure X**?



(b)

- A** It is ventral to the nerve cord.
- B** It is dorsal to the digestive tract.
- C** It is anterior to the crop.
- D** It is posterior to the anus.

To observe the **aortic arches** of an earthworm, a student should use

- A** an ultracentrifuge
- B** a dissecting microscope
- C** an electron microscope
- D** a pipette

(b)

The **absorption** and **circulation** of materials in a hydra are most **similar** to the absorption and circulation of materials in a

- A** grasshopper
- B** protozoan
- C** human
- D** frog

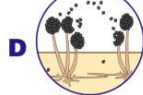


(b)



PREVIEW

Please [Sign In](#) or [Sign Up](#) to download the printable version of this worksheet

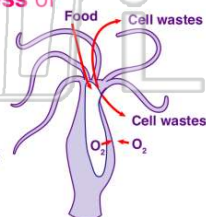


D four mononoid cells



The **movement of gases** indicated by the **arrows** in the diagram below of a hydra, takes place by the **process of**

- A** pinocytosis
- B** diffusion
- C** active transport
- D** dehydration synthesis



(b)

In certain invertebrates, the function of **Malpighian tubules** and **nephridia** is to

- A** collect waste materials
- B** carry oxygen
- C** transmit nerve impulses
- D** synthesize proteins

(a)