

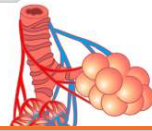


Name \_\_\_\_\_ Class \_\_\_\_\_ Date \_\_\_\_\_

- 1 In the grasshopper and earthworm, the **efficiency of food absorption** is **increased** by the presence of
- A a large stomach, which secretes hormones
  - B infolds, which add surface area to the digestive tube
  - C the pancreas, which secretes digestive enzymes into the intestine
  - D the liver, which absorbs excess sugar and stores it as glycogen

- 3 The **tracheal tubes** of grasshoppers, the **moist skin** of earthworms, and the **alveoli** of humans are structural adaptations that aid in

- A autotrophic nutrition
- B heterotrophic nutrition
- C anaerobic respiration
- D aerobic respiration



5



## PREVIEW

Please [Sign In](#) or [Sign Up](#) to download the printable version of this worksheet

7

- B offspring were produced from different combinations of genes
- C parent fish had not been exposed to mutagenic agents
- D parent fish had not reproduced sexually

9

Which organism possesses a **single opening** which functions as a **mouth** for the ingestion of food and also as an **anus** for the elimination of undigested materials?

- A human
- B grasshopper
- C Hydra
- D earthworm



- 2 The **hydra** and the **amoeba** are **similar** in that both organisms

- A eliminate ammonia and carbon dioxide through the cell membrane
- B move by means of pseudopods
- C surround prey with tentacles
- D carry out both intracellular and extracellular digestion

- 4 Which statement regarding **respiration** is **correct**?

- A Respiration in autotrophic organisms occurs only during the day.
- B Fungi and monerans carry out aerobic respiration only.
- C All living organisms carry out some form of respiration.

- 10 In sexual reproduction, the **2n** chromosome number is **restored** as a direct result of

- A fertilization
- B gamete formation
- C cleavage
- D meiosis



## ANSWER KEY

In the grasshopper and earthworm, the **efficiency of food absorption** is **increased** by the presence of

- A** a large stomach, which secretes hormones
- B** infolds, which add surface area to the digestive tube
- C** the pancreas, which secretes digestive enzymes into the intestine
- D** the liver, which absorbs excess sugar and stores it as glycogen

(b)

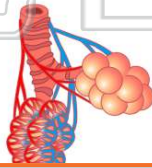
The **hydra** and the **amoeba** are **similar** in that both organisms

- A** eliminate ammonia and carbon dioxide through the cell membrane
- B** move by means of pseudopods
- C** surround prey with tentacles
- D** carry out both intracellular and extracellular digestion

(a)

The **tracheal tubes** of grasshoppers, the **moist skin** of earthworms, and the **alveoli** of humans are structural adaptations that aid in

- A** autotrophic nutrition
- B** heterotrophic nutrition
- C** anaerobic respiration
- D** aerobic respiration



(d)

Which statement regarding **respiration** is **correct**?

- A** Respiration in autotrophic organisms occurs only during the day.
- B** Fungi and monerans carry out aerobic respiration only.
- C** All living organisms carry out some form of respiration.
- D** All autotrophs and heterotrophs require

(c)



## PREVIEW

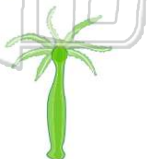
Please [Sign In](#) or [Sign Up](#) to download the printable version of this worksheet

- B** different combinations of genes
- C** parent fish had not been exposed to mutagenic agents
- D** parent fish had not reproduced sexually

- A** compete successfully with all birds
- B** make its own food
- C** hide from predators
- D** avoid toxic waste materials

Which organism possesses a **single opening** which functions as a **mouth** for the ingestion of food and also as an **anus** for the elimination of undigested materials?

- A** human
- B** grasshopper
- C** Hydra
- D** earthworm



(c)

In sexual reproduction, the **2n** chromosome number is **restored** as a direct result of

- A** fertilization
- B** gamete formation
- C** cleavage
- D** meiosis

(a)