



Name _____ Class _____ Date _____

1 A **fungus** is an example of

- A an herbivore
- B a saprophyte
- C an autotroph
- D an omnivore



3 In an ecosystem, nutrients would be **recycled** if they were **transferred** directly from herbivores to carnivores to

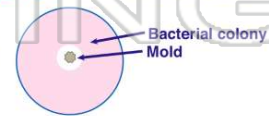
- A hosts
- B prey
- C decomposers

2 A colony of bacteria growing on a culture medium is **successfully synthesizing** an organic compound. Which procedure would be **least likely** to have an effect on this synthesis?

- A adding more subunits of the organic compound to the medium
- B lowering the pH of the medium
- C raising the temperature of the colony from 20°C to 30°C
- D increasing the number of hormone molecules in the colony

4 Which statement best explains why **no mold is growing in the white area** next to the bacterial colony?

- A The mold cannot use the nutrient agar for food.
- B The bacteria may release a substance that prevents mold growth.



5



PREVIEW

Please [Sign In](#) or [Sign Up](#) to download the printable version of this worksheet

7

- B photosynthesis only
- C cellular respiration only
- D fermentation



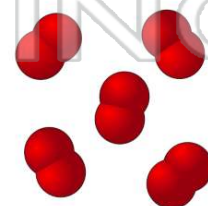
- of the birds
- B disease that killed the birds was inherited
- C gene alterations in the bacterial cells killed the birds
- D birds produced antigens in response to the bacteria

9 Which statement describes a **role of fungi** in an **ecosystem**?

- A They transfer energy to decaying matter.
- B They release oxygen into the ecosystem.
- C They recycle chemicals from dead organisms.
- D They synthesize organic nutrients from inorganic substances.

10 Microorganisms that **require oxygen** to survive are described as

- A aerobic
- B anaerobic
- C heterotrophic
- D saprophytic





ANSWER KEY

A **fungus** is an example of

- A an herbivore
- B a saprophyte
- C an autotroph
- D an omnivore



(b)

A colony of bacteria growing on a culture medium is **successfully synthesizing** an organic compound. Which procedure would be **least likely** to have an effect on this synthesis?

- A adding more subunits of the organic compound to the medium
- B lowering the pH of the medium
- C raising the temperature of the colony from 20°C to 30°C
- D increasing the number of hormone molecules in the colony

(d)

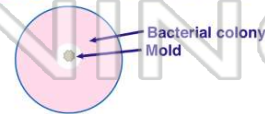
In an ecosystem, nutrients would be **recycled** if they were **transferred** directly from herbivores to carnivores to

- A hosts
- B prey
- C decomposers
- D autotrophs

(c)

Which statement best explains why **no mold is growing in the white area** next to the bacterial colony?

- A The mold cannot use the nutrient agar for food.
- B The bacteria may release a substance that prevents mold growth.
- C The mold is causing the bacterial colony to reproduce faster.



(b)



PREVIEW

Please [Sign In](#) or [Sign Up](#) to download the printable version of this worksheet

- C cellular respiration only
- D fermentation



- B disease that killed the birds was inherited
- C gene alterations in the bacterial cells killed the birds
- D birds produced antigens in response to the bacteria

Which statement describes a **role of fungi** in an **ecosystem**?

- A They transfer energy to decaying matter.
- B They release oxygen into the ecosystem.
- C They recycle chemicals from dead organisms.
- D They synthesize organic nutrients from inorganic substances.

(c)

Microorganisms that **require oxygen** to survive are described as

- A aerobic
- B anaerobic
- C heterotrophic
- D saprophytic

(a)

