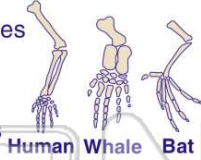




Name \_\_\_\_\_ Class \_\_\_\_\_ Date \_\_\_\_\_

1 The **bones** in the **wing** of a bird, the **flipper** of a whale, and the **arm** of a human are considered by many scientists to be

- A heterotrophic aggregates
- B abiotic factors
- C complex organelles
- D homologous structures



2 Because **turkey vultures** feed mainly on animals that they have **not** killed, they are known as

- A predators
- B scavengers
- C omnivores
- D autotrophs

3 After a rabbit population reaches the **carrying capacity** of its habitat, the population of rabbits will most likely

- A decrease, only
- B increase, only
- C alternately increase and decrease



4 Which **sequence** represents the correct order of organization in complex organisms?

- A tissues → organs → systems → cells
- B organs → tissues → systems → cells
- C systems → organs → cells → tissues
- D cells → tissues → organs → systems

5



## PREVIEW

Please [Sign In](#) or [Sign Up](#) to download the printable version of this worksheet

7

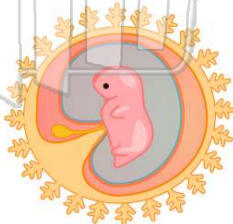
- A highly developed receptors
- B brain, fused ganglia, central nerve cord
- C no brain, fused ganglia, tympana
- D no brain, nerve net, modified neurons

- B internal fertilization
- C motile gametes
- D external development



9 In most mammalian species, which structure supplies food to the **developing embryo**?

- A amnion
- B ovary
- C placenta
- D allantois



10 Which substances are **metabolic waste products** excreted by animals?

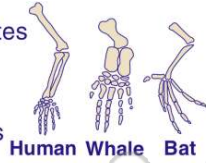
- A oxygen, ammonia, and salts
- B glucose, urea, and carbon dioxide
- C uric acid, oxygen, and water
- D water, urea, and carbon dioxide



## ANSWER KEY

The **bones** in the **wing** of a bird, the **flipper** of a whale, and the **arm** of a human are considered by many scientists to be

- A heterotrophic aggregates
- B abiotic factors
- C complex organelles
- D homologous structures



(d)

Because **turkey vultures** feed mainly on animals that they have **not** killed, they are known as

- A predators
- B scavengers
- C omnivores
- D autotrophs

(b)

After a rabbit population reaches the **carrying capacity** of its habitat, the population of rabbits will most likely

- A decrease, only
- B increase, only
- C alternately increase and decrease
- D remain unchanged



(c)

Which **sequence** represents the correct order of organization in complex organisms?

- A tissues → organs → systems → cells
- B organs → tissues → systems → cells
- C systems → organs → cells → tissues
- D cells → tissues → organs → systems

(d)

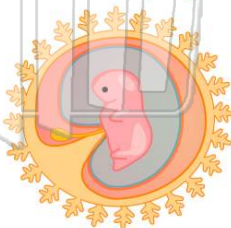


## PREVIEW

Please [Sign In](#) or [Sign Up](#) to download the printable version of this worksheet

In most mammalian species, which structure supplies food to the **developing embryo**?

- A amnion
- B ovary
- C placenta
- D allantois



(c)

Which substances are **metabolic waste products** excreted by animals?

- A oxygen, ammonia, and salts
- B glucose, urea, and carbon dioxide
- C uric acid, oxygen, and water
- D water, urea, and carbon dioxide

(d)

