



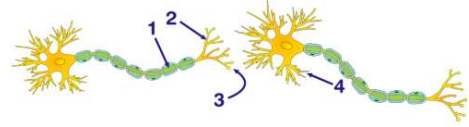
Name _____ Class _____ Date _____

1 An animal maintains its fluid balance by regulating the **gain and loss of water**. This maintenance is an example of

- A homeostasis
- B hydrolysis
- C cyclosis
- D peristalsis



2 Which letter in the diagram below indicates a **synapse**?



- A 1
- B 2
- C 3
- D 4

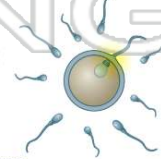
3 A **change** that initiates an **electrochemical message along a neuron** is known as

- A an effector
- B a stimulus
- C a response
- D an impulse



4 A characteristic of **fertilization** in most terrestrial vertebrates is the

- A fusion of gametes in moist internal environment
- B fusion of gametes in a dry external environment
- C release of thousands of eggs



5



PREVIEW

Please [Sign In](#) or [Sign Up](#) to download the printable version of this worksheet

7

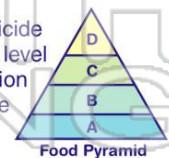
- A by the environment.
- B Holes in the ozone layer vary in size depending on the season.
- C Acids in rain bleach the brown feathers of the birds.
- D Mutations occur only during certain seasons.

- cellular communication
- C limited genetic variability in the species
- D fewer unfavorable mutations in the species

9

- Which action illustrates an increased **understanding and concern by humans** for ecological interrelationships?
- A importing organisms in order to stabilize existing ecosystems
 - B eliminating pollution standards for industries that promote technology
 - C removing natural resources at a rate equal to the needs of the population
 - D implementing laws to regulate the number of animals hunted and killed each year

10 The **concentration** of the pesticide **DDT** in individual organisms at level D is higher than the concentration in individuals at level A because **DDT** is



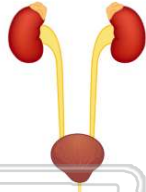
- A synthesized by organisms at level D
- B excreted by organisms at level A as toxic waste
- C produced by organisms at level C which are eaten by organisms at level D
- D passed through levels A, B, and C to organisms at level D



ANSWER KEY

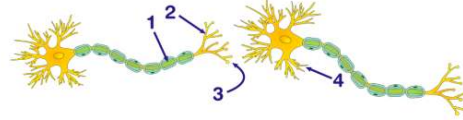
An animal maintains its fluid balance by regulating the **gain and loss of water**. This maintenance is an example of

- A** homeostasis
- B** hydrolysis
- C** cyclosis
- D** peristalsis



(a)

Which letter in the diagram below indicates a **synapse**?



(c)

- A** 1
- B** 2
- C** 3
- D** 4

A **change** that initiates an **electrochemical message along a neuron** is known as

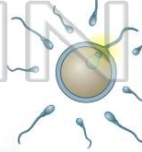
- A** an effector
- B** a stimulus
- C** a response
- D** an impulse



(b)

A characteristic of **fertilization** in most terrestrial vertebrates is the

- A** fusion of gametes in moist internal environment
- B** fusion of gametes in a dry external environment
- C** release of thousands of eggs
- D** release of nonmotile sperm



(a)



PREVIEW

Please [Sign In](#) or [Sign Up](#) to download the printable version of this worksheet

- B** ...in the ozone layer vary in size depending on the season.
- C** Acids in rain bleach the brown feathers of the birds.
- D** Mutations occur only during certain seasons.

- C** limited genetic variability in the species
- D** fewer unfavorable mutations in the species

Which action illustrates an increased **understanding and concern by humans** for ecological interrelationships?

- A** importing organisms in order to stabilize existing ecosystems
- B** eliminating pollution standards for industries that promote technology
- C** removing natural resources at a rate equal to the needs of the population
- D** implementing laws to regulate the number of animals hunted and killed each year

(d)

The **concentration** of the pesticide **DDT** in individual organisms at level D is higher than the concentration in individuals at level A because **DDT** is



(d)

- A** synthesized by organisms at level D
- B** excreted by organisms at level A as toxic waste
- C** produced by organisms at level C which are eaten by organisms at level D
- D** passed through levels A, B, and C to organisms at level D