

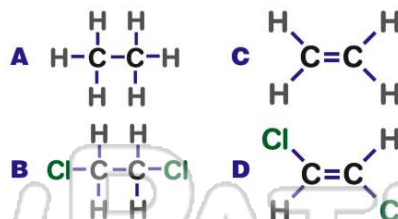


Name _____ Class _____ Date _____

1 The **organic compound** represented by the condensed structural formula **CH₃CH₂CH₂CHO** is classified as an

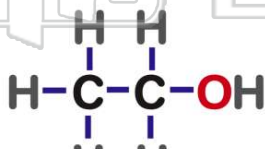
- A alcohol
- B aldehyde
- C ester
- D ether

2 Which **structural formula** represents a **saturated hydrocarbon**?



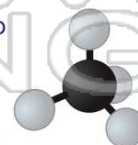
3 A **compound** with the formula **CH₃CH₂OH** is classified as an

- A alkane
- B alkene
- C alcohol
- D acid



4 In general, which **property** do **organic compounds** share?

- A high melting point
- B high electrical conductivity
- C readily soluble in water
- D slow reaction rate



PREVIEW

Please [Sign In](#) or [Sign Up](#) to download the printable version of this worksheet

- _____ tetrahedron
- C rectangle
 - D parallelogram



- B C₂H₂, C₂H₄, C₄H₈
- C C₂H₄, C₂H₆, C₃H₆
- D C₂H₄, C₃H₆, C₄H₈

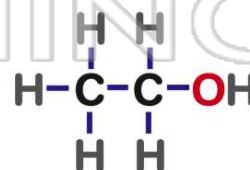
9 The **formula** for a **saturated hydrocarbon** is

- A C₆H₆
- B C₆H₁₀
- C C₆H₁₂
- D C₆H₁₄



10 Which compound is an **isomer** of **CH₃CH₂OH**?

- A CH₃COOH
- B CH₃CH₂CH₃
- C CH₃OCH₃
- D CH₃COCH₃





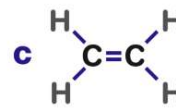
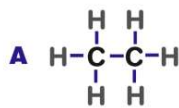
ANSWER KEY

The **organic compound** represented by the condensed structural formula **CH₃CH₂CH₂CHO** is classified as an

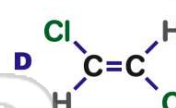
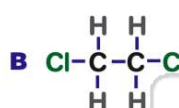
- A alcohol
- B aldehyde
- C ester
- D ether

(b)

Which **structural formula** represents a **saturated hydrocarbon**?

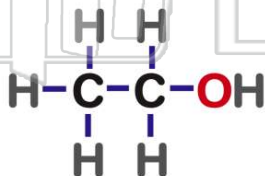


(a)



A **compound** with the formula **CH₃CH₂OH** is classified as an

- A alkane
- B alkene
- C alcohol
- D acid



(c)

In general, which **property** do **organic compounds** share?

- A high melting point
- B high electrical conductivity
- C readily soluble in water
- D slow reaction rate



(d)



PREVIEW

Please [Sign In](#) or [Sign Up](#) to download the printable version of this worksheet

D parallelogram

D C₂H₄, C₃H₆, C₄H₈

The **formula** for a **saturated hydrocarbon** is

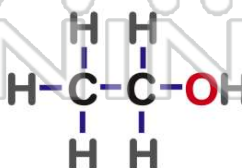
- A C₆H₆
- B C₆H₁₀
- C C₆H₁₂
- D C₆H₁₄



(d)

Which compound is an **isomer** of **CH₃CH₂OH**?

- A CH₃COOH
- B CH₃CH₂CH₃
- C CH₃OCH₃
- D CH₃COCH₃



(c)