



Name _____ Class _____ Date _____

1 Layers of volcanic ash often serve as useful **geologic time markers** because ash layers usually




- A deposit quickly over a wide area
- B are older than the surrounding rock
- C can be sampled easily
- D darken with age

2 Which **bedrock drill core** contains fossils of the life-form that lived **earliest** in the Earth's history?

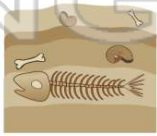
| | | | |
|---|------------------------------------|---|---------------------------|
| A | flowering plants placoderm fish | C | fig leaves Coelophysis |
| B | clams stromatolites | D | cycads eurypterids |

3 According to **fossil evidence**, most plants and animals that lived on the Earth in the geologic past have



- A survived until the present
- B been discovered & identified
- C become extinct
- D evolved into mammalian

4 In which way are **index fossils** and **volcanic ash deposits** similar?



- A Both can usually be dated with radiocarbon.
- B Both normally occur in nonsedimentary rocks.
- C Both strongly resist chemical weathering

5




PREVIEW

Please [Sign In](#) or [Sign Up](#) to download the printable version of this worksheet

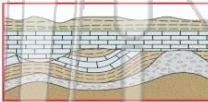
D stromatolite



D metaconglomerate



9 **Unconformities** (buried erosional surfaces) provide evidence that



- A many life-forms have become extinct
- B faults are older than the rock in which they are found
- C part of the geologic record has been destroyed
- D metamorphic rocks have formed from sedimentary rocks

10 Compared to the length of time for the **first half-life** of a sample of a radioactive isotope, the length of time for the **second half-life** is

- A less
- B greater
- C the same



ANSWER KEY

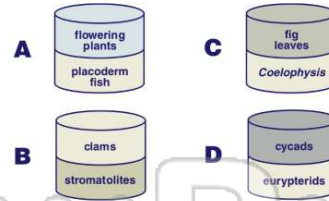
Layers of volcanic ash often serve as useful **geologic time markers** because ash layers usually



- A** deposit quickly over a wide area
- B** are older than the surrounding rock
- C** can be sampled easily
- D** darken with age

(a)

Which **bedrock drill core** contains fossils of the life-form that lived **earliest** in the Earth's history?



(b)

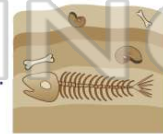
According to **fossil evidence**, most plants and animals that lived on the Earth in the geologic past have



- A** survived until the present
- B** been discovered & identified
- C** become extinct
- D** evolved into mammalian life-forms

(c)

In which way are **index fossils** and **volcanic ash deposits** similar?



- A** Both can usually be dated with radiocarbon.
- B** Both normally occur in nonsedimentary rocks.
- C** Both strongly resist chemical weathering
- D** Both often serve as geologic time markers

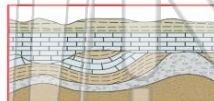
(d)



PREVIEW

Please [Sign In](#) or [Sign Up](#) to download the printable version of this worksheet

Unconformities (buried erosional surfaces) provide evidence that



- A** many life-forms have become extinct
- B** faults are older than the rock in which they are found
- C** part of the geologic record has been destroyed
- D** metamorphic rocks have formed from sedimentary rocks

(c)

Compared to the length of time for the **first half-life** of a sample of a radioactive isotope, the length of time for the **second half-life** is

- A** less
- B** greater
- C** the same

(c)