




Name _____ Class _____ Date _____

1 As a ship crosses the Prime Meridian, the **altitude of Polaris** measured from the ship is **50°**.

What is the ship's **location**?

A 0° latitude 50° east longitude
B 0° latitude 50° west longitude
C 50° north latitude 0° longitude
D 50° south latitude 0° longitude



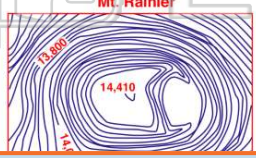
2 Which procedure is an example of **classifying observed data**?

A grouping stars by brightness
B graphing temperature versus time for a particular date
C photographing the cloud cover for a location throughout 1 week
D measuring the angle of Polaris from two different locations

3 A topographic map of Mt. Rainier in Washington state is shown below.


What is the **contour interval** of the map?

A 20 ft
B 40 ft
C 100 ft
D 200 ft



4 An observer on Earth determines that the apparent **diameter of the Moon** as viewed from Earth **varies in a cyclic manner**. The best explanation for this observation is that the

A Moon is rotating
B Moon's orbit is elliptical
C atmospheric transparency of the Moon changes



5



PREVIEW


Please [Sign In](#) or [Sign Up](#) to download the printable version of this worksheet

6

C silt
D clay




A density
B identity
C cleavage
D internal atomic structure



9 What is the **difference** between the dry-bulb temperature and the wet-bulb temperature when the **relative humidity** is **28%** and the **dry-bulb temperature** is **0°C**?

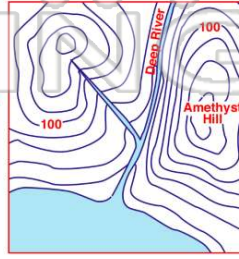
A 11°C
B 2°C
C 28°C
D 4°C



10 A contour map is shown below. Elevations are shown in feet.

Which side of Amethyst Hill has the **steepest slope**?

A north
B south
C east
D west





ANSWER KEY

As a ship crosses the Prime Meridian, the **altitude of Polaris** measured from the ship is **50°**.

What is the ship's location?

- A 0° latitude 50° east longitude
- B 0° latitude 50° west longitude
- C 50° north latitude 0° longitude
- D 50° south latitude 0° longitude



(C)

Which procedure is an example of **classifying observed data**?

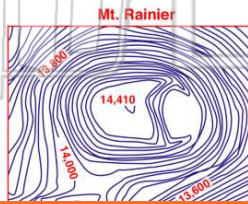
- A grouping stars by brightness
- B graphing temperature versus time for a particular date
- C photographing the cloud cover for a location throughout 1 week
- D measuring the angle of Polaris from two different locations

(a)

A topographic map of **Mt. Rainier** in Washington state is shown below.

What is the **contour interval** of the map?

- A 20 ft
- B 40 ft
- C 100 ft
- D 200 ft



(b)

An observer on Earth determines that the apparent **diameter of the Moon** as viewed from Earth **varies in a cyclic manner**. The best explanation for this observation is that the

- A Moon is rotating
- B Moon's orbit is elliptical
- C atmospheric transparency of the Moon changes
- D distance between the Moon



(b)



PREVIEW

Please [Sign In](#) or [Sign Up](#) to download the printable version of this worksheet

D clay



- B identity
- C cleavage
- D internal atomic structure



What is the **difference** between the dry-bulb temperature and the wet-bulb temperature when the **relative humidity is 28%** and the **dry-bulb temperature is 0°C**?

- A 11°C
- B 2°C
- C 28°C
- D 4°C

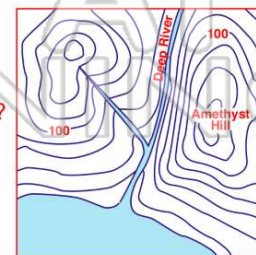


(d)

A contour map is shown below. Elevations are shown in feet.

Which side of **Amethyst Hill** has the **steepest slope**?

- A north
- B south
- C east
- D west



(d)