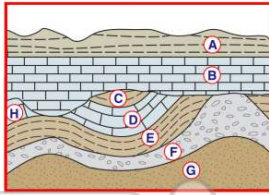




Name _____ Class _____ Date _____

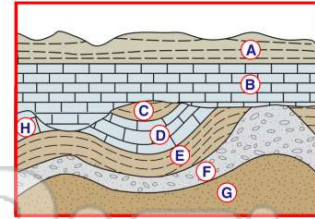
1 The **folding** of rock layers **G through C** was most likely caused by

- A erosion of overlying sediments
- B contact metamorphism
- C the collision of lithospheric plates
- D the extrusion of igneous rock



2 Which two letters represent **bedrock of the same age**?

- A A and E
- B B and D
- C F and G
- D D and H



3 Which property would best **distinguish sediment deposited by a river** from **sediment deposited by a glacier**?

- A mineral composition of the sediment
- B amount of sediment sorting
- C thickness of sediment layers
- D age of fossils found in the sediment

4 What is the **origin** of **fine-grained igneous rock**?

- A lava that cooled slowly on Earth's surface
- B lava that cooled quickly on Earth's surface
- C silt that settled slowly in ocean



PREVIEW

Please [Sign In](#) or [Sign Up](#) to download the printable version of this worksheet

D rock at location A



- C foliated metamorphic rock
- D nonfoliated metamorphic rock

9 The **edges** of most **lithospheric plates** are characterized by

- A reversed magnetic orientation
- B unusually rapid radioactive decay
- C frequent volcanic activity
- D low P-wave and high S-wave velocity

10 Which rock forms by the **recrystallization of unmelted rock material** under conditions of high temperature and pressure?

- A granite
- B gneiss
- C rock gypsum
- D bituminous coal

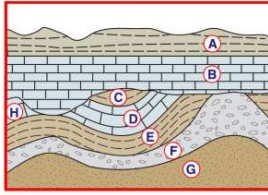




ANSWER KEY

The **folding** of rock layers **G through C** was most likely caused by

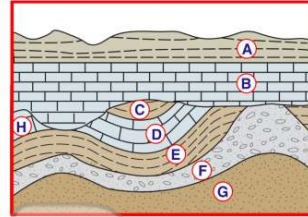
- A erosion of overlying sediments
- B contact metamorphism
- C the collision of lithospheric plates
- D the extrusion of igneous rock



(C)

Which two letters represent **bedrock of the same age**?

- A A and E
- B B and D
- C F and G
- D D and H



(d)

Which property would best **distinguish** sediment deposited by a **river** from sediment deposited by a **glacier**?

- A mineral composition of the sediment
- B amount of sediment sorting
- C thickness of sediment layers
- D age of fossils found in the sediment

(b)

What is the **origin** of **fine-grained igneous rock**?

- A lava that cooled slowly on Earth's surface
- B lava that cooled quickly on Earth's surface
- C silt that settled slowly in ocean water
- D silt that settled quickly in ocean water



(b)

T
d
V
S
A
B
C
D



PREVIEW

V
A
B
C
D

Please [Sign In](#) or [Sign Up](#) to download the printable version of this worksheet

location A



D nonfoliated metamorphic rock

The **edges** of most **lithospheric plates** are characterized by

- A reversed magnetic orientation
- B unusually rapid radioactive decay
- C frequent volcanic activity
- D low P-wave and high S-wave velocity

(C)

Which rock forms by the **recrystallization of unmelted rock material** under conditions of high temperature and pressure?

- A granite
- B gneiss
- C rock gypsum
- D bituminous coal



(b)