



Name _____ Class _____ Date _____

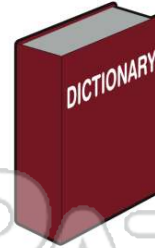
1 Dictionaries are **biographies**.

- A true
- B false



2 Dictionaries are **science fiction**.

- A true
- B false



3 Stories that use **facts about the past** and **seem** like they could have **really happened** are _____.

- A science fiction
- B non-fiction



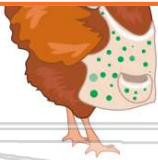
4 All poetry must rhyme.



PREVIEW

Please [Sign In](#) or [Sign Up](#) to download the printable version of this worksheet

7 A true
B false



- A non-fiction
- B autobiography
- C hysterical fiction
- D historical fiction



9 Stories about **children and their pets who explore outer space** would be _____.

- A realistic fiction
- B science fiction
- C non-fiction
- D peninsula



10 Writings can be identified by **different styles** called _____.

- A awesome
- B generous
- C genres
- D authors

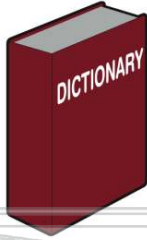




ANSWER KEY

Dictionaries are **biographies**.

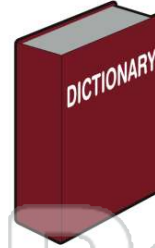
- A true
- B false



(b)

Dictionaries are **science fiction**.

- A true
- B false



(b)

Stories that use **facts about the past** and **seem** like they could have really happened are _____.

- A science fiction
- B non-fiction
- C historical fiction



(c)

All poetry must rhyme.



(b)



PREVIEW

Please [Sign In](#) or [Sign Up](#) to download the printable version of this worksheet

Stories about **children and their pets who explore outer space** would be _____.

- A realistic fiction
- B science fiction
- C non-fiction
- D peninsula



(b)

Writings can be identified by **different styles** called _____.

- A awesome
- B generous
- C genres
- D authors



(c)