



Name _____ Class _____ Date _____

1 The chef is **putting a lot of** _____ in the meal.

- A spies
- B spise
- C spice
- D sippies



2 "Help! I am **afraid of** _____!"

- A mouses
- B mise
- C mice
- D mices



3 I like to **eat** white _____ with sweet and sour chicken.

- A rice
- B race
- C rise



4 It is **easy to** _____ letters with this.

- A trase
- B trace
- C terase



PREVIEW

7 Please [Sign In](#) or [Sign Up](#) to download the printable version of this worksheet

- B lase
- C lace
- D laese



- B vase
- C vaste
- D vace



9 Please come to **my** _____ for lunch.

- A hose
- B houce
- C hause
- D house



10 Oh dear, **may I** _____ one of your pencils?

- A uss
- B use
- C uce
- D usce





ANSWER KEY

The chef is **putting a lot** of _____ in the meal.

- A spies
- B spise
- C spice
- D sippies



(C)

"Help! I am **afraid** of _____!"

- A mouses
- B mise
- C mice
- D mices



(C)

I like to **eat** white _____ with sweet and sour chicken.

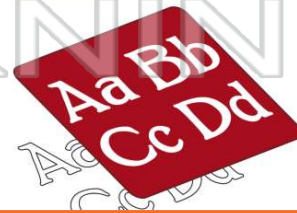
- A rice
- B race
- C rise
- D raise



(a)

It is **easy** to _____ letters with this.

- A trase
- B trace
- C terase
- D trass



(b)



PREVIEW

Please [Sign In](#) or [Sign Up](#) to download the printable version of this worksheet

- C lace
- D laese



- C vaste
- D vace



Please come to **my** _____ for lunch.

- A hose
- B houce
- C hause
- D house



(d)

Oh dear, **may I** _____ one of your pencils?

- A uss
- B use
- C uce
- D usce



(b)