



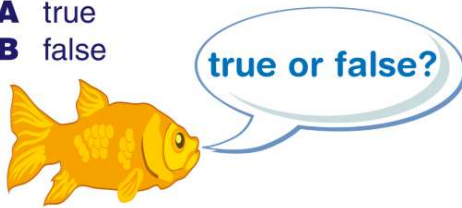
Antonyms

ELA
C

Name _____ Class _____ Date _____

1 The opposite of **easy** is **hard**.

- A true
- B false



2 The opposite of **bottom** is **top**.

- A true
- B false



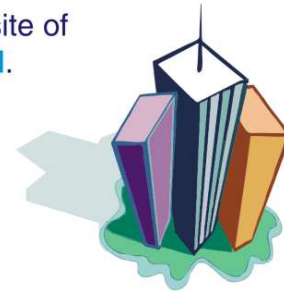
3 The opposite of **asleep** is **awake**.

- A true
- B false



4 The opposite of **high** is **tall**.

- A true
- B false



5 The opposite of **far** is **near**.

- A true
- B false



6 The opposite of **thin** is **thick**.

- A true
- B false



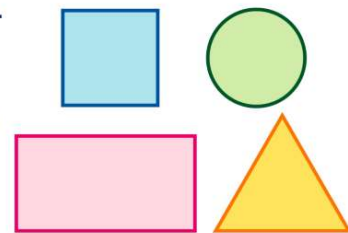
7 The opposite of **raw** is **big**.

- A true
- B false



8 The opposite of **different** is **same**.

- A true
- B false



9 The opposite of **outside** is **inside**.

- A true
- B false



10 The opposite of **walk** is **wet**.

- A true
- B false



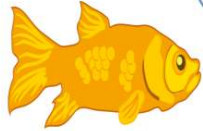


Antonyms

ANSWER KEY

The opposite of **easy** is **hard**.

- A true
- B false



true or false?

(a)

The opposite of **bottom** is **top**.

- A true
- B false



(a)

The opposite of **asleep** is **awake**.

- A true
- B false



(a)

The opposite of **high** is **tall**.

- A true
- B false



(b)

The opposite of **far** is **near**.

- A true
- B false



(a)

The opposite of **thin** is **thick**.

- A true
- B false



(a)

The opposite of **raw** is **big**.

- A true
- B false

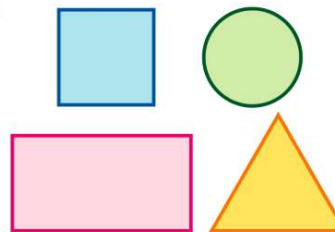


true or false?

(b)

The opposite of **different** is **same**.

- A true
- B false



(a)

The opposite of **outside** is **inside**.

- A true
- B false



(a)

The opposite of **walk** is **wet**.

- A true
- B false



(b)