



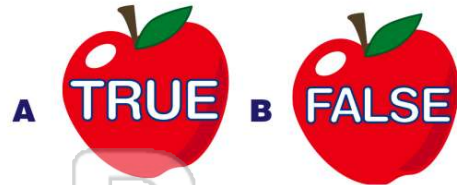
Name _____ Class _____ Date _____

1 **Send** and **receive** are antonyms.

- A true
- B false

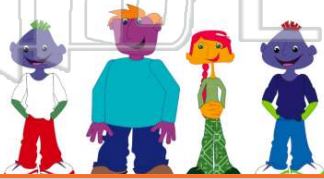


2 **Sharp** and **dull** are antonyms.



3 **Last** and **first** are antonyms.

- A true
- B false



4 **Narrow** and **wide** are antonyms.



PREVIEW

Please [Sign In](#) or [Sign Up](#) to download the printable version of this worksheet

- B top
- C pull
- D run



- B friend
- C nice
- D cloudy



9 An antonym for **strong** is _____

- A noisy
- B green
- C weak
- D circle



10 An antonym for **smile** is _____

- A enemy
- B purple
- C triangle
- D frown





Antonyms

ELA
C

ANSWER KEY

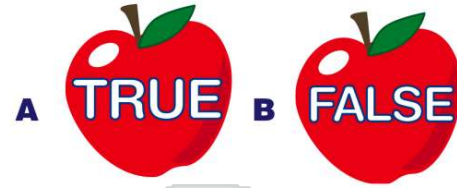
Send and **receive** are antonyms.

- A true
- B false



(a)

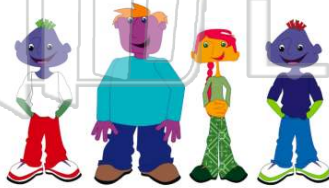
Sharp and **dull** are antonyms.



(a)

Last and **first** are antonyms.

- A true
- B false



(a)

Narrow and **wide** are antonyms.



(a)



PREVIEW

Please [Sign In](#) or [Sign Up](#) to download the printable version of this worksheet

- C pull
- D run



- C nice
- D cloudy



An antonym for **strong** is

- A noisy
- B green
- C weak
- D circle



(c)

An antonym for **smile** is

- A enemy
- B purple
- C triangle
- D frown



(d)