



Name \_\_\_\_\_ Class \_\_\_\_\_ Date \_\_\_\_\_

1 Locate the **adverb** in the sentence.  
The man ran quickly across the street.

- A man
- B ran
- C quickly
- D across



2 **Present participles** always end in \_\_\_\_\_.

- A -ed
- B -ing
- C -s
- D -en



3 Fill in the blank with an **adjective**.  
The girl picked \_\_\_\_\_ strawberries in the field.

- A fruit
- B vines



4 Which is the **adverb**?

- A pink
- B often
- C slow
- D quick



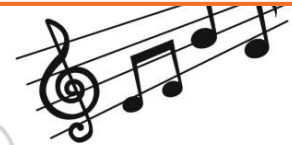
## PREVIEW

Please [Sign In](#) or [Sign Up](#) to download the printable version of this worksheet

7  
A How?  
B When?  
C Where?  
D How often?



- A sanged
- B sung
- C sunging
- D sunged



9 The **suspicious** car is parked outside the bank.  
The underlined word in the sentence is a(n) \_\_\_\_\_.

- A verb
- B noun
- C adjective
- D adverb



10 Which word is the **adverb**?  
The locker with the dirty socks smelled terribly.

- A dirty
- B good
- C terribly
- D sentence doesn't say





## ANSWER KEY

Locate the **adverb** in the sentence.

The man ran quickly across the street.

- A man
- B ran
- C quickly
- D across



(C)

**Present participles** always end in \_\_\_\_\_.

- A -ed
- B -ing
- C -s
- D -en



(b)

Fill in the blank with an **adjective**.

The girl picked \_\_\_\_\_ strawberries in the field.

- A fruit
- B vines
- C juicy
- D four



(C)

Which is the **adverb**?

- A pink
- B often
- C slow
- D quick



(b)

S  
S  
P  
P  
A  
B  
C  
D



## PREVIEW

Please [Sign In](#) or [Sign Up](#) to download the printable version of this worksheet

- B When?
- C Where?
- D How often?



- B sung
- C singing
- D sunged



The **suspicious** car is parked outside the bank.

The underlined word in the sentence is a(n) \_\_\_\_\_.

- A verb
- B noun
- C adjective
- D adverb



(C)

Which word is the **adverb**?

The locker with the dirty socks smelled terribly.

- A dirty
- B good
- C terribly
- D sentence doesn't say



(C)