



Name _____ Class _____ Date _____

1 A _____ is a person in a story, novel, or play.

- A plot
- B setting
- C character
- D mascot



2 The **setting** in a story is _____ the story takes place.

- A why
- B where
- C about
- D because



3 The _____ of a story is what goes on in a story. It's the series of events that give a story its meaning.

4 Marcie picked out her favorite cereal and put it in the grocery cart. Then she followed her mom as she got in line to pay for their groceries.



PREVIEW

Please [Sign In](#) or [Sign Up](#) to download the printable version of this worksheet

7 baseball equipment. As they put the bats into the black bag, Trevor told his dad he was glad he was his baseball coach.

What is the **setting** of this text?

- A in Alaska
- B a basement
- C a baseball field
- D a store



8 as Molly's best friend, Gretchen, walked in the door, everyone yelled surprise! Gretchen was so shocked.

What is the **plot** of this text?

- A Gretchen was Molly's friend.
- B Gretchen was old.
- C Molly had a surprise party for Gretchen.
- D Molly liked Gretchen.



9 Billy loved conducting science experiments. He thought about asking his dad to do some experiments with him but he hadn't gotten the chance to yet. Right now, Brian was diligently working on constructing a working volcano.

Choose the **character(s)** of this text.

- A Billy and his friends
- B Billy and his dad
- C Billy
- D a dad



10 Amanda ran into her room and lay down onto her bed. The tears began to fall. She was never going to talk to her so-called best friend again.

What is the **setting** of this text?

- A Amanda's backyard
- B Amanda's bedroom
- C Amanda's kitchen
- D Amanda's school

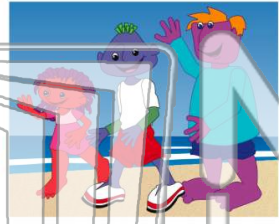




Name _____ Class _____ Date _____

1 A _____ is a person in a story, novel, or play.

- A plot
- B setting
- C character
- D mascot



2 The **setting** in a story is _____ the story takes place.

- A why
- B where
- C about
- D because



3 The _____ of a story is what goes on in a story. It's the series of events that give a story its meaning.

4 Marcie picked out her favorite cereal and put it in the grocery cart. Then she followed her mom as she got in line to pay for their groceries.

PREVIEW

Please [Sign In](#) or [Sign Up](#) to download the printable version of this worksheet

7 baseball equipment. As they put the bats into the black bag, Trevor told his dad he was glad he was his baseball coach.

What is the **setting** of this text?

- A in Alaska
- B a basement
- C a baseball field
- D a store



as Molly's best friend, Gretchen, walked in the door, everyone yelled surprise! Gretchen was so shocked.

What is the **plot** of this text?

- A Gretchen was Molly's friend.
- B Gretchen was old.
- C Molly had a surprise party for Gretchen.
- D Molly liked Gretchen.



9 Billy loved conducting science experiments. He thought about asking his dad to do some experiments with him but he hadn't gotten the chance to yet. Right now, Brian was diligently working on constructing a working volcano.

Choose the **character(s)** of this text.

- A Billy and his friends
- B Billy and his dad
- C Billy
- D a dad



10 Amanda ran into her room and lay down onto her bed. The tears began to fall. She was never going to talk to her so-called best friend again.

What is the **setting** of this text?

- A Amanda's backyard
- B Amanda's bedroom
- C Amanda's kitchen
- D Amanda's school

