



Name _____ Class _____ Date _____

1 How many **adjectives** are in the following sentence?

The wise owl knew the answer.



- A 1
- B 2
- C 3
- D 4

3 What is an **antonym** for feast?

- A eat
- B dinner
- C banquet
- D snack



2 What is the proper **adverb** for the following sentence?

Rachel and Jennifer worked _____ together.

- A well
- B wellness
- C willing
- D wellily

4 What is a **synonym** for make?

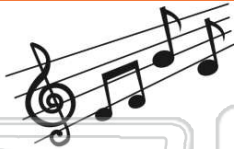
- A crush
- B destroy
- C create
- D bake



PREVIEW

7 Please [Sign In](#) or [Sign Up](#) to download the printable version of this worksheet

- A after
- B during
- C early
- D lately



- A accurate and mistaken
- B accurate and question
- C written and mistaken
- D written and question

9 Choose the two **synonyms** in this set of words.

hold • pull • tow • hand

- A hold and pull
- B pull and tow
- C tow and hand
- D pull and hand



10 Which word means **the outside of a tree** OR **the sound a dog makes**?

- A leaf
- B bark
- C whimper
- D rough



ANSWER KEY

How many **adjectives** are in the following sentence?

The wise owl knew the answer.



(a)

- A 1
- B 2
- C 3
- D 4

What is the proper **adverb** for the following sentence?

Rachel and Jennifer worked _____ together.

(a)

- A well
- B wellness
- C welling
- D wellily

What is an **antonym** for feast?

- A eat
- B dinner
- C banquet
- D snack



(d)

What is a **synonym** for make?

- A crush
- B destroy
- C create
- D bake

(c)



PREVIEW

Please [Sign In](#) or [Sign Up](#) to download the printable version of this worksheet

- B during
- C early
- D lately



- B accurate and question
- C written and mistaken
- D written and question

Choose the two **synonyms** in this set of words.

hold • pull • tow • hand

- A hold and pull
- B pull and tow
- C tow and hand
- D pull and hand



(b)

Which word means **the outside of a tree** OR **the sound a dog makes**?

- A leaf
- B bark
- C whimper
- D rough

(b)