



Name \_\_\_\_\_ Class \_\_\_\_\_ Date \_\_\_\_\_

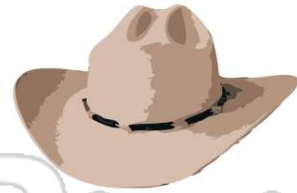
1 The scientist \_\_\_\_\_ a **new medicine** in the **lab**.

- A developed
- B direction
- C difference
- D distant



2 The square dancers will \_\_\_\_\_ **next summer**.

- A region
- B return
- C ready
- D rain



3 Where might you find a bear's **den**?

- A under a deck
- B by a thruway
- C in the forest
- D near a river



4 In which **subject** might you learn to paint a **landscape**?

- A music
- B math
- C science
- D art

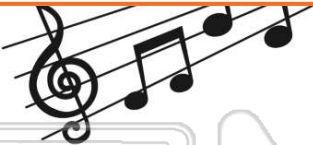


## PREVIEW

Please [Sign In](#) or [Sign Up](#) to download the printable version of this worksheet

7

- B perhaps
- C probably
- D picked



9 The blue wall will probably look fine when the paint dries.  
Which word in the sentence is an **adverb**?

- A blue
- B quickly
- C probably
- D will



10 What was the **cause** of the **train crash**?

- A A driver misjudged the speed of the train.
- B The bus was driving next to the track.
- C The track had been painted last summer.
- D The moon was full that night.





## ANSWER KEY

The scientist \_\_\_\_\_ a **new medicine** in the **lab**.

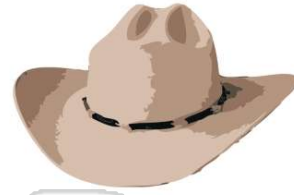
- A developed
- B direction
- C difference
- D distant



(a)

The square dancers will \_\_\_\_\_ **next summer**.

- A region
- B return
- C ready
- D rain



(b)

Where might you find a bear's **den**?

- A under a deck
- B by a thruway
- C in the forest
- D near a river



(c)

In which **subject** might you learn to **paint a landscape**?

- A music
- B math
- C science
- D art



(d)



## PREVIEW

Please [Sign In](#) or [Sign Up](#) to download the printable version of this worksheet

- C probably
- D picked



The blue wall will probably look fine when the paint dries.

Which word in the sentence is an **adverb**?

- A blue
- B quickly
- C probably
- D will



(c)

What was the **cause** of the **train crash**?

- A A driver misjudged the speed of the train.
- B The bus was driving next to the track.
- C The track had been painted last summer.
- D The moon was full that night.



(a)