



Name _____ Class _____ Date _____

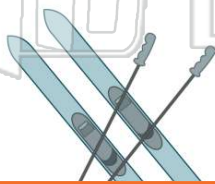
1 What is the **plural** of the word **half**?

- A halves
- B halfes
- C halves
- D half's



3 What is the **plural** of **ski**?

- A skiis
- B skies
- C ski's
- D skis



2 The **plural** of **glass** is _____.

- A glasses
- B glass'
- C glasses'
- D glasss



4 The mice were hungry for corn.
What is the **object** in this sentence?

- A mice
- B corn
- C happy



5



PREVIEW

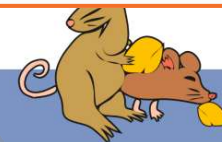
Please [Sign In](#) or [Sign Up](#) to download the printable version of this worksheet

7

- A student
- B students
- C students'
- D student's



- B mice
- C mice's
- D mouses



9

The boys became interested in stamps.
The boys' collections couldn't grow fast enough.
Which word shows **possession**?

- A boys
- B boys'
- C couldn't
- D collections



10

My son's teachers can't come to any of the soccer games.
Which word shows **possession**?

- A teachers
- B can't
- C son's
- D games





ANSWER KEY

What is the **plural** of the word **half**?

- A halves
- B halfes
- C halves
- D half's



(C)

The **plural** of **glass** is _____.

- A glasses
- B glass'
- C glasses'
- D glass



(a)

What is the **plural** of **ski**?

- A skiis
- B skies
- C ski's
- D skis



(d)

The mice were hungry for corn.
What is the **object** in this sentence?

- A mice
- B corn
- C happy
- D some



(b)



PREVIEW

Please [Sign In](#) or [Sign Up](#) to download the printable version of this worksheet

The boys became interested in stamps.
The boys' collections couldn't grow fast enough.
Which word shows **possession**?

- A boys
- B boys'
- C couldn't
- D collections



(b)

My son's teachers can't come to any of the soccer games.
Which word shows **possession**?

- A teachers
- B can't
- C son's
- D games



(c)