




Name _____ Class _____ Date _____

1 Authors sometimes use **illustrations** and **photographs** to enliven the text.

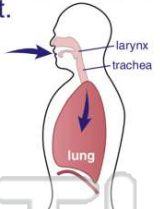
True or false?

A true
B false



2 Successful readers need to read the **labels**, or _____, near **photographs** and **illustrations** in a text.

A index
B references
C captions
D charts



3 Successful readers often **preview** a **selection** by looking at the photographs and _____.

A references
B captions
C footnotes
D



4 Authors often **organize information** in a selection by creating a **chart**.

True or false?

A true
B false

5




PREVIEW

Please [Sign In](#) or [Sign Up](#) to download the printable version of this worksheet

7


A comics
B political cartoons
C riddles
D jokes



10 **Childhood obesity** is an appropriate topic for a **political cartoon**.

True or false?

A true
B false





ANSWER KEY

Authors sometimes use **illustrations** and **photographs** to enliven the text.

True or false?

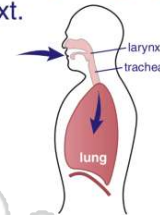


- A true
- B false

(a)

Successful readers need to read the **labels**, or _____, near photographs and illustrations in a text.

- A index
- B references
- C captions
- D charts



(c)

Successful readers often **preview a selection** by looking at the photographs and _____.

- A references
- B captions
- C footnotes
- D illustrations



(d)

Authors often **organize information** in a selection by creating a **chart**.

True or false?

- A true
- B false

(a)



PREVIEW

Please [Sign In](#) or [Sign Up](#) to download the printable version of this worksheet

In which **section of a newspaper** are **political cartoons** usually found?

- A comics
- B sports
- C classifieds
- D editorials



(d)

Childhood obesity is an appropriate topic for a **political cartoon**.

True or false?

- A true
- B false



(a)