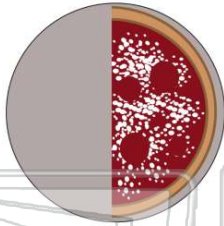




Name _____ Class _____ Date _____

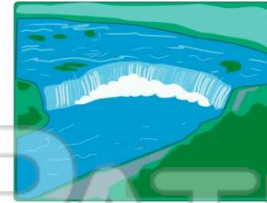
1 The prefix **semi-** in **semifinal** means _____.

- A winner
- B loser
- C half
- D quarter



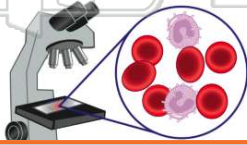
2 The prefix **hydro-** in **hydroelectric** means _____.

- A water
- B land
- C sky
- D power



3 The prefix **micro-** in **microscope** means _____.

- A big
- B vision
- C alive
- D small



4 The prefix **audi-** in **audition** means "to hear."

True or false?

- A true
- B false



5



PREVIEW

Please [Sign In](#) or [Sign Up](#) to download the printable version of this worksheet

7

- B state
- C ate
- D hood



- B ave
- C ment
- D ent



9 What is the **suffix** in the word **clockwise**?

- A se
- B wise
- C clock
- D ock



10 **Affixes** is the general term for

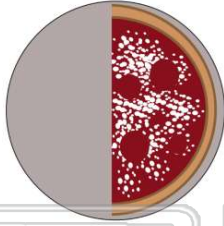
- A root words and base words
- B words of foreign origin
- C adjectives and adverbs
- D prefixes and suffixes



ANSWER KEY

The prefix **semi-** in **semifinal** means _____.

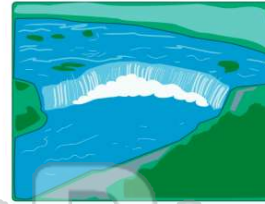
- A winner
- B loser
- C half
- D quarter



(C)

The prefix **hydro-** in **hydroelectric** means _____.

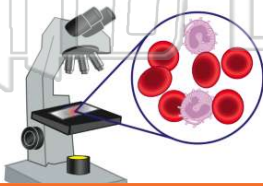
- A water
- B land
- C sky
- D power



(a)

The prefix **micro-** in **microscope** means _____.

- A big
- B vision
- C alive
- D small



(d)

The prefix **audi-** in **audition** means "to hear."

True or false?

- A true
- B false



(a)



PREVIEW

Please [Sign In](#) or [Sign Up](#) to download the printable version of this worksheet

What is the **suffix** in the word **clockwise**?

- A se
- B wise
- C clock
- D ock



(b)

Affixes is the general term for _____.

- A root words and base words
- B words of foreign origin
- C adjectives and adverbs
- D prefixes and suffixes

(d)