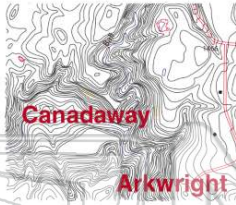




Name _____ Class _____ Date _____

1 What text feature presents information created by a **cartographer**?

- A map
- B graph
- C glossary
- D photograph



2 The words that **label** photographs are called _____.

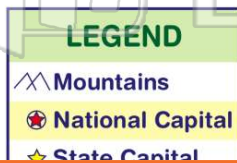
- A phrases
- B paragraphs
- C captions
- D capitals



A pair of cheetahs

3 What **text feature** contains a **legend**?

- A map
- B graph
- C glossary
- D photograph



4 Publishers may use **sideways print** known as _____ to **emphasize** a key word or phrase.

- A boldface
- B italics
- C capitals



PREVIEW

Please [Sign In](#) or [Sign Up](#) to download the printable version of this worksheet

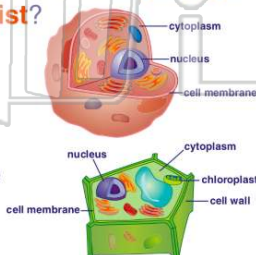
7
A
B graph
C glossary
D photograph



- C glossary
- D photograph

9 What text feature presents **information** created by an **artist**?

- A chart
- B illustration
- C glossary
- D copyright page



10 An **effective reader** uses the **text features** to _____ the textbook before beginning to read.

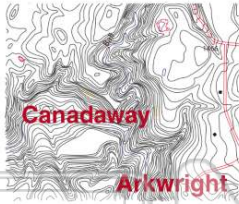
- A pretest
- B prefix
- C preview
- D preserve



ANSWER KEY

What text feature presents information created by a cartographer?

- A map
- B graph
- C glossary
- D photograph



(a)

The words that label photographs are called _____.

- A phrases
- B paragraphs
- C captions
- D capitals

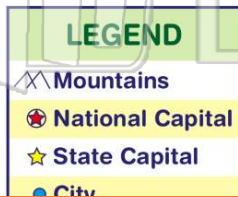


A pair of cheetahs

(c)

What text feature contains a legend?

- A map
- B graph
- C glossary
- D photograph



(a)

Publishers may use **sideways print** known as _____ to emphasize a key word or phrase.

- A boldface
- B italics
- C capitals
- D lower case

(b)

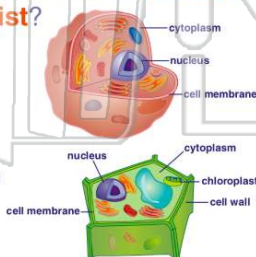


PREVIEW

Please [Sign In](#) or [Sign Up](#) to download the printable version of this worksheet

What text feature presents information created by an artist?

- A chart
- B illustration
- C glossary
- D copyright page



(b)

An effective reader uses the **text features** to _____ the textbook before beginning to read.

- A pretest
- B prefix
- C preview
- D preserve

(c)