



Name \_\_\_\_\_ Class \_\_\_\_\_ Date \_\_\_\_\_

1 Matt came in **13th** place. John came in just **after** Matt. **What place did John come in?**

- A 12th
- B 13th
- C 14th
- D 1st



2 Going **left to right**, which dog is in **second** place?



- A Fido
- B Zero
- C Rex
- D Spot

3 In the race, Tom came in **sixteenth** place. Susan came in just **before** him. **What place did Susan come in?**

- A seventeenth
- B fourteenth

4 **12th** is the **same** as **twelfth**.

- A true
- B false

# 12th

5



## PREVIEW

Please [Sign In](#) or [Sign Up](#) to download the printable version of this worksheet

7

- A tenth
- B fifth
- C sixth
- D eighth



- A 12th
- B 20th
- C 2rd
- D 200th



9 Maya's birthday is the day **after** mine. My birthday is **August 13th**. Maya's birthday is August \_\_\_\_\_.

- A 14th
- B 12th
- C 10th
- D 3rd

AUGUST						
			1	2	3	4
5	6	7	8	9	10	11
12	13	14	15	16	17	18
19	20	21	22	23	24	25
26	27	28	29	30	31	

10 Akil is **next** to Dan. Ann is **next** to Akil. Matt is **after** Ann. Dan is **first**. **Who is last?**

- A Ann
- B Akil
- C Matt
- D Dan





## ANSWER KEY

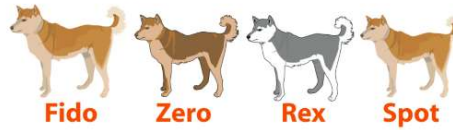
Matt came in **13th** place. John came in just **after** Matt. **What place did John come in?**

- A 12th
- B 13th
- C 14th
- D 1st



(c)

Going **left to right**, which dog is in **second** place?



- A Fido
- B Zero
- C Rex
- D Spot

(b)

In the race, Tom came in **sixteenth** place. Susan came in just **before** him. **What place did Susan come in?**

- A seventeenth
- B fourteenth
- C fifth

(d)

**12th** is the **same** as **twelfth**.

- A true
- B false

# 12th

(a)



## PREVIEW

Please [Sign In](#) or [Sign Up](#) to download the printable version of this worksheet

- B fifth
- C sixth
- D eighth



- B 20th
- C 2rd
- D 200th



Maya's birthday is the day **after** mine. My birthday is **August 13th**. **Maya's birthday is August \_\_\_\_\_.**

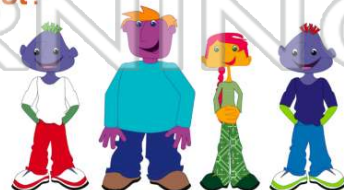
- A 14th
- B 12th
- C 10th
- D 3rd

AUGUST						
		1	2	3	4	
5	6	7	8	9	10	11
12	13	14	15	16	17	18
19	20	21	22	23	24	25
26	27	28	29	30	31	

(a)

Akil is **next** to Dan. Ann is **next** to Akil. Matt is **after** Ann. Dan is **first**. **Who is last?**

- A Ann
- B Akil
- C Matt
- D Dan



(c)