



# Evaluate Open Sentences

Name \_\_\_\_\_ Class \_\_\_\_\_ Date \_\_\_\_\_

1 Evaluate the following equation then choose the answer that **best** completes the equation.

$$x + 5 = 10$$

- A  $x = 4$
- B  $x = 5$
- C  $x = 6$
- D  $x = 7$



2 Evaluate the following equation then choose the answer that **best** completes the equation.

$$3 + y = 14$$

- A  $y = 9$
- B  $y = 10$
- C  $y = 11$
- D  $y = 12$



3 Evaluate the equation, then decide if the statement is **true** or **false**.

$$4 + x = 9$$

$$x = 5$$

A true



4 Evaluate the following equation then choose the answer that **best** completes the equation.

$$19 + n = 23$$

- A  $n = 7$
- B  $n = 6$

5



## PREVIEW

Please [Sign In](#) or [Sign Up](#) to download the printable version of this worksheet

7

- A  $x = 14$
- B  $x = 13$
- C  $x = 12$
- D  $x = 11$

$$y = 12$$

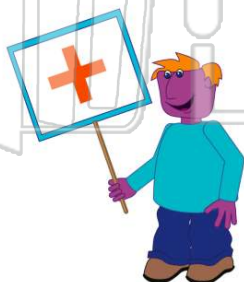
- A true
- B false



9 Solve for  $y$ .

$$y + 6 = 18$$

- A  $y = 12$
- B  $y = 13$
- C  $y = 14$
- D  $y = 15$



10 Evaluate the following equation then choose the answer that **best** completes the equation.

$$8 - n = 4$$

- A  $n = 2$
- B  $n = 3$
- C  $n = 4$
- D  $n = 5$



## ANSWER KEY

Evaluate the following equation then choose the answer that **best** completes the equation.

$$x + 5 = 10$$

- A  $x = 4$
- B  $x = 5$
- C  $x = 6$
- D  $x = 7$



(b)

Evaluate the following equation then choose the answer that **best** completes the equation.

$$3 + y = 14$$

- A  $y = 9$
- B  $y = 10$
- C  $y = 11$
- D  $y = 12$



(c)

Evaluate the equation, then decide if the statement is **true** or **false**.

$$4 + x = 9$$

$$x = 5$$

- A true
- B false



(a)

Evaluate the following equation then choose the answer that **best** completes the equation.

$$19 + n = 23$$

- A  $n = 7$
- B  $n = 6$
- C  $n = 5$

(d)



## PREVIEW

Please [Sign In](#) or [Sign Up](#) to download the printable version of this worksheet

- C  $x = 12$
- D  $x = 11$

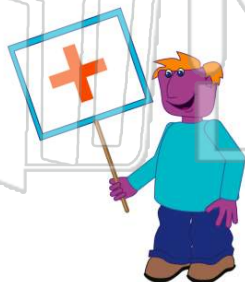
- A true
- B false



Solve for y.

$$y + 6 = 18$$

- A  $y = 12$
- B  $y = 13$
- C  $y = 14$
- D  $y = 15$



(a)

Evaluate the following equation then choose the answer that **best** completes the equation.

$$8 - n = 4$$

- A  $n = 2$
- B  $n = 3$
- C  $n = 4$
- D  $n = 5$

(c)