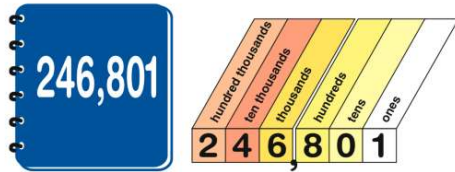




Name \_\_\_\_\_ Class \_\_\_\_\_ Date \_\_\_\_\_

1

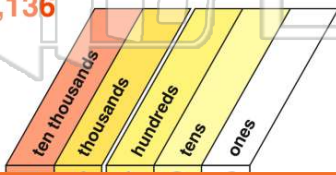


- A The 6 is in the tens place.
- B The 6 is in the hundreds place.
- C The 6 is in the thousands place.
- D The 6 is in the ten thousands place.

3

Locate the number that is in the **tens** place: **74,136**

- A 7
- B 4
- C 1
- D 3



5



## PREVIEW

Please [Sign In](#) or [Sign Up](#) to download the printable version of this worksheet

7

- B ninety thousand, eighteen, two hundred
- C ninety one hundred, two hundred three
- D nine eighteen thousand, three

9

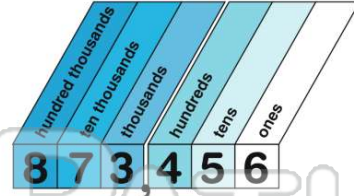
**913,725** = nine hundred \_\_\_\_\_ thousand, seven hundred twenty-five

- A one three
- B ten thousands
- C thirteen
- D three

2

Find the number that is in the **hundred thousands** place: **873,456**

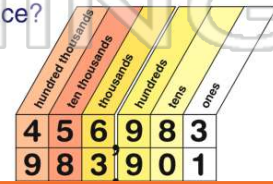
- A 8
- B 7
- C 3
- D 4



4

Which number has an **8** in the **ten thousands** place?

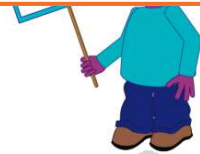
- A 456,983
- B 983,901
- C 923,718
- D 807,231



10

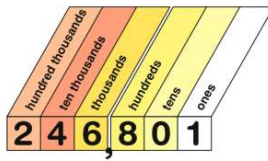
**141,202** =

- A one forty one, two
- B one hundred forty-one thousand, two hundred two
- C one forty thousand, two hundred two
- D one four one thousand, two





## ANSWER KEY

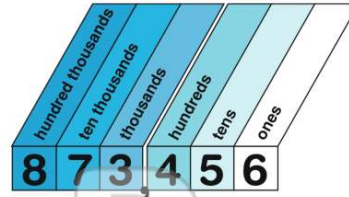


- A The 6 is in the tens place.
- B The 6 is in the hundreds place.
- C The 6 is in the thousands place.
- D The 6 is in the ten thousands place.

(C)

Find the number that is in the **hundred thousands** place: **873,456**

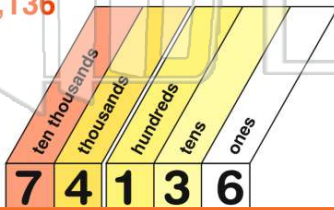
- A 8
- B 7
- C 3
- D 4



(a)

Locate the number that is in the **tens** place: **74,136**

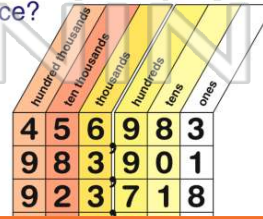
- A 7
- B 4
- C 1
- D 3



(d)

Which number has an **8** in the **ten thousands** place?

- A 456,983
- B 983,901
- C 923,718
- D 807,231



(b)



## PREVIEW

Please [Sign In](#) or [Sign Up](#) to download the printable version of this worksheet

- C ninety one hundred, two hundred three
- D nine eighteen thousand, three

- C 147,900
- D 147,908



**913,725** = nine hundred thousand, seven hundred twenty-five

- A one three
- B ten thousands
- C thirteen
- D three

(C)

**141,202** =

- A one forty one, two
- B one hundred forty-one thousand, two hundred two
- C one forty thousand, two hundred two
- D one four one thousand, two

(b)