



Name \_\_\_\_\_ Class \_\_\_\_\_ Date \_\_\_\_\_

1 Point C (-2, -5) would be located in which quadrant?

A I  
B II  
C III  
D IV

2 Jeanette plots point A (5, 3) in quadrant I.

A true  
B false

3 Kathryn is plotting points on a grid. She plots the angle shown on the grid. What kind of angle did she plot?

A acute  
B obtuse

4 Point A (-4, 5), point B (-2, 3) and point C (-4, 3) are plotted on a grid and lines are drawn to connect the points. What type of triangle is drawn?

A acute  
B obtuse



## PREVIEW

Please [Sign In](#) or [Sign Up](#) to download the printable version of this worksheet

A (-4, -6)  
B (-4, 6)  
C (4, 6)  
D (4, -6)

A true  
B false

9 What is the area of the figure on the grid shown?

$A = b \cdot h$

A 8 units<sup>2</sup>  
B 10 units<sup>2</sup>  
C 12 units<sup>2</sup>  
D 15 units<sup>2</sup>

10 On the grid shown, the perimeter of the square is the same as its area.

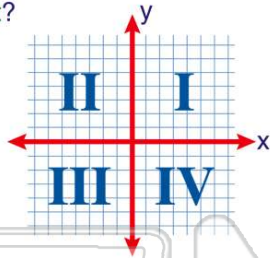
A true  
B false



## ANSWER KEY

Point C (-2, -5) would be located in which quadrant?

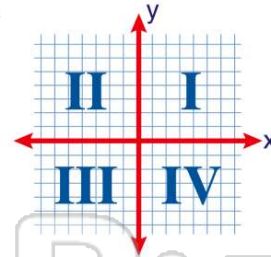
- A I
- B II
- C III
- D IV



(C)

Jeanette plots point A (5, 3) in quadrant I.

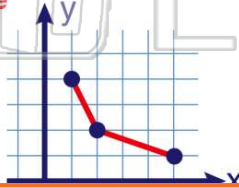
- A true
- B false



(a)

Kathryn is plotting points on a grid. She plots the angle shown on the grid. What kind of angle did she plot?

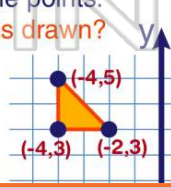
- A acute
- B obtuse
- C right



(b)

Point A (-4, 5), point B (-2, 3) and point C (-4, 3) are plotted on a grid and lines are drawn to connect the points. What type of triangle is drawn?

- A acute
- B obtuse
- C right



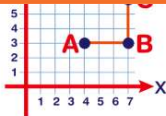
(C)



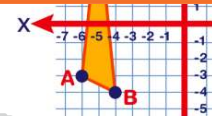
## PREVIEW

Please [Sign In](#) or [Sign Up](#) to download the printable version of this worksheet

- B (-4, 6)
- C (4, 6)
- D (4, -6)



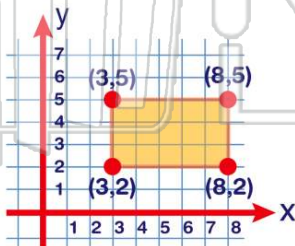
- A true
- B false



What is the area of the figure on the grid shown?

$A = b \cdot h$

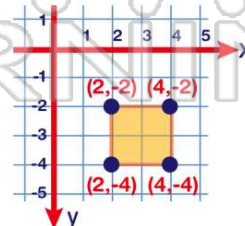
- A 8 units<sup>2</sup>
- B 10 units<sup>2</sup>
- C 12 units<sup>2</sup>
- D 15 units<sup>2</sup>



(d)

On the grid shown, the perimeter of the square is the same as its area.

- A true
- B false



(b)