



Name _____ Class _____ Date _____

- 1 A triangle has legs **24 cm** and **45 cm** long. It has a hypotenuse of **51 cm**. It is a **right triangle**.

True or false?

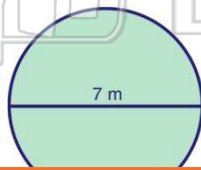
- A true
B false



- 3 What is the **circumference** of the circle shown?

$$C = \pi d$$

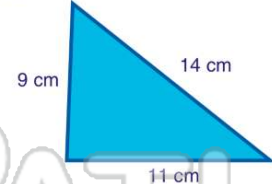
- A 10.99 m
B 21.98 m



- 2 A triangle has legs **9 cm** and **11 cm** long. It has a hypotenuse of **14 cm**. It is a **right triangle**.

True or false?

- A true
B false



- 4 What is the **circumference** of the circle shown?

$$C = \pi d$$

- A 12.56 cm
B 18.84 cm



PREVIEW

Please [Sign In](#) or [Sign Up](#) to download the printable version of this worksheet

- 7 If the area of a round drum is **78.5 in.²**, what is the **radius**?
- A 21.98 in.²
B 43.96 in.²
C 153.86 in.²
D 615.44 in.²



- 8 If the area of the surface of a tree stump is **157 cm²**, what is the **diameter** of the stump?
- A 78.5 cm²
B 157 cm²
C 1962.5 cm²
D 7850 cm²



- 9 If the area of a round can of tuna is **7.065 in.²**, what is the **radius**?

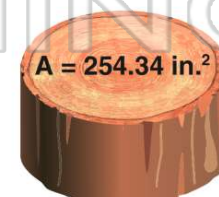
$$A = \pi r^2$$

- A 1.5 in.
B 1.56 in.
C 2.25 in.
D 2.44 in.



- 10 If the area of the surface of a tree stump is **254.34 in.²**, what is the **diameter** of the stump?

- A 9 in.
B 18 in.
C 81 in.
D 162 in.



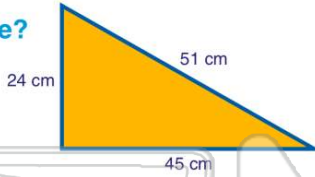


ANSWER KEY

A triangle has legs **24 cm** and **45 cm** long. It has a hypotenuse of **51 cm**. It is a **right triangle**.

True or false?

- A true
- B false

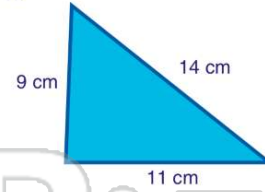


(a)

A triangle has legs **9 cm** and **11 cm** long. It has a hypotenuse of **14 cm**. It is a **right triangle**.

True or false?

- A true
- B false

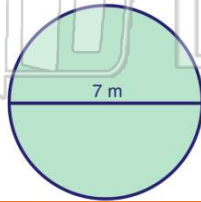


(b)

What is the **circumference** of the circle shown?

$C = \pi d$

- A 10.99 m
- B 21.98 m
- C 38.47 m

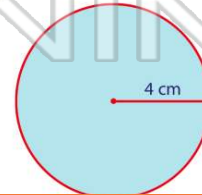


(b)

What is the **circumference** of the circle shown?

$C = \pi d$

- A 12.56 cm
- B 18.84 cm
- C 25.12 cm



(c)



PREVIEW

Please [Sign In](#) or [Sign Up](#) to download the printable version of this worksheet

- A
- B 43.96 in.²
- C 153.86 in.²
- D 615.44 in.²



- B 157 cm²
- C 1962.5 cm²
- D 7850 cm²



If the area of a round can of tuna is **7.065 in.²**, what is the **radius**?

$A = \pi r^2$

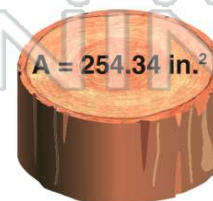
- A 1.5 in.
- B 1.56 in.
- C 2.25 in.
- D 2.44 in.



(a)

If the area of the surface of a tree stump is **254.34 in.²**, what is the **diameter** of the stump?

- A 9 in.
- B 18 in.
- C 81 in.
- D 162 in.



(b)