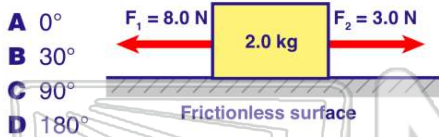




Name _____ Class _____ Date _____

- 1 Two forces act concurrently on an object. Their **resultant force** has the **largest magnitude** when the **angle** between the forces is



- A 0°
 B 30°
 C 90°
 D 180°

- 3 Which **combination of fundamental units** can be used to express the **weight** of an object?

- A kilogram/second
 B kilogram•meter
 C kilogram•meter/second



- 4 When a student looks into a **plane mirror**, she sees a **virtual image** of herself. However, when she looks into a sheet of paper, no such image forms.

Which **phenomenon** occurs at the surface of the **paper**?

- A regular reflection
 B diffuse reflection

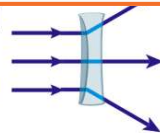


PREVIEW

Please [Sign In](#) or [Sign Up](#) to download the printable version of this worksheet

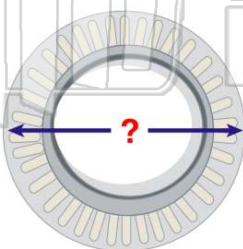
- 7
- A virtual images, only
 B both real images and virtual images
 C neither real images nor virtual images

- A smaller, inverted, and real
 B larger, inverted, and real
 C smaller, erect, and virtual
 D larger, erect, and virtual



- 9 What is the **appropriate diameter** of a dinner plate?

- A 0.0025 m
 B 0.025 m
 C 0.25 m
 D 2.5 m



- 10 A man weighs **900 newtons** standing on a scale in a stationary elevator. If some time later the reading on the scale is **1200 newtons**, the **elevator must be moving with**

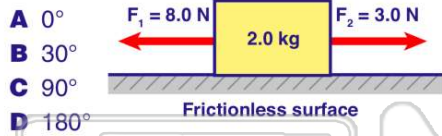
- A constant acceleration downward
 B constant speed downward
 C constant acceleration upward
 D constant speed upward





ANSWER KEY

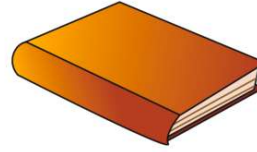
Two forces act concurrently on an object. Their **resultant force** has the **largest magnitude** when the **angle** between the forces is



(a)

The **mass** of a physics textbook is closest to

- A** 10^3 kg
- B** 10^1 kg
- C** 10^0 kg
- D** 10^{-2} kg



(c)

Which **combination of fundamental units** can be used to express the **weight** of an object?

- A** kilogram/second
- B** kilogram•meter
- C** kilogram•meter/second
- D** kilogram•meter/second²



(d)

When a student looks into a **plane mirror**, she sees a **virtual image** of herself. However, when she looks into a sheet of paper, no such image forms.

Which **phenomenon** occurs at the surface of the **paper**?

- A** regular reflection
- B** diffuse reflection
- C** polarization



(b)

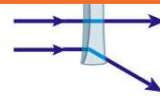


PREVIEW

Please [Sign In](#) or [Sign Up](#) to download the printable version of this worksheet

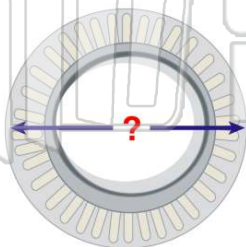
D neither real images nor virtual images

- B** larger, inverted, and real
- C** smaller, erect, and virtual
- D** larger, erect, and virtual



What is the **appropriate diameter** of a dinner plate?

- A** 0.0025 m
- B** 0.025 m
- C** 0.25 m
- D** 2.5 m



(c)

A man weighs **900 newtons** standing on a scale in a stationary elevator. If some time later the reading on the scale is **1200 newtons**, the **elevator must be moving with**

- A** constant acceleration downward
- B** constant speed downward
- C** constant acceleration upward
- D** constant speed upward



(c)