



Name \_\_\_\_\_ Class \_\_\_\_\_ Date \_\_\_\_\_

1 Some animals are big. Some animals are small. Which animal is the **biggest**?

- A a grizzly bear
- B a frog
- C a robin
- D a rabbit



3 A **bird** has \_\_\_\_\_.

- A feathers
- B fur
- C scales
- D teeth



2 A **polar bear** has \_\_\_\_\_.

- A feathers
- B fur
- C scales
- D spikes



4 A **fish**, like a frog, **lays** \_\_\_\_\_.

- A insects
- B food
- C eggs
- D gills



5



## PREVIEW

7 Please [Sign In](#) or [Sign Up](#) to download the printable version of this worksheet

- B a bird
- C a mammal
- D a reptile

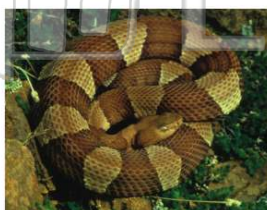


- B a snake
- C a monkey
- D a spider



9 I lay **eggs**. I have **scales**. I breathe with my **lungs**. What am I?

- A a mammal
- B a bird
- C a reptile
- D a fish



10 **Mammals, reptiles, birds, and amphibians** are **all** groups.

- A insect
- B plant
- C animal
- D nonliving





## ANSWER KEY

Some animals are big. Some animals are small. Which animal is the **biggest**?

- A a grizzly bear
- B a frog
- C a robin
- D a rabbit



(a)

A **polar bear** has \_\_\_\_\_.

- A feathers
- B fur
- C scales
- D spikes



(b)

A **bird** has \_\_\_\_\_.

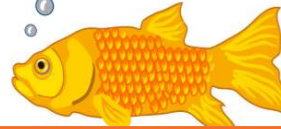
- A feathers
- B fur
- C scales
- D teeth



(a)

A **fish**, like a frog, **lays** \_\_\_\_\_.

- A insects
- B food
- C eggs
- D gills



(c)



## PREVIEW

Please [Sign In](#) or [Sign Up](#) to download the printable version of this worksheet

- C a mammal
- D a reptile

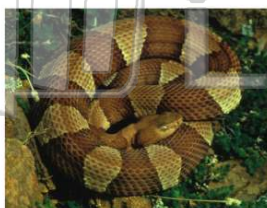


- C a monkey
- D a spider



I lay **eggs**. I have **scales**.  
I breathe with my **lungs**.  
What am I?

- A a mammal
- B a bird
- C a reptile
- D a fish



(c)

Mammals, reptiles, birds, and amphibians are all \_\_\_\_\_ groups.

- A insect
- B plant
- C animal
- D nonliving



(c)