



Name _____ Class _____ Date _____

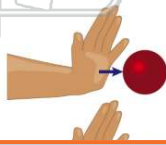
1 _____ are **forces** that occur when you **physically touch or make contact** with another object.

- A Contact forces
- B Non-contact forces
- C Indirect forces
- D Non-touching



3 The _____ you **push** on an object, the **more** the object will be forced to move.

- A easier
- B harder



2 What does the **distance** an object is moved **depend on**?

- A how much force is used to move it
- B how much friction is used to move it
- C how much speed is used to move it
- D how much ice is used to move it



4 How difficult or easy it is to **move an object** depends on the object's _____.

- A mass
- B color



5

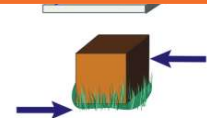
7

Please [Sign In](#) or [Sign Up](#) to download the printable version of this worksheet

- A mass
- B pressure
- C friction
- D pull

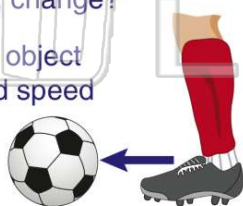


- A less friction
- B more friction
- C little friction
- D the same amount of friction



9 What can **forces**, such as **pushes**, **pulls**, and **friction**, change?

- A the size of the object
- B the motion and speed of an object
- C the color of an object
- D the mass of an object



10 If you were riding your bike **up a large hill**, you would need to apply _____ than if you were riding down a large hill.

- A more force
- B less force
- C the same force
- D a small amount of force





ANSWER KEY

_____ are **forces** that occur when you **physically touch or make contact** with another object.

- A Contact forces
- B Non-contact forces
- C Indirect forces
- D Non-touching



(a)

What does the **distance** an object is moved **depend on**?

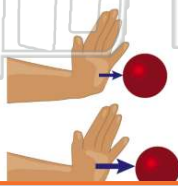
- A how much force is used to move it
- B how much friction is used to move it
- C how much speed is used to move it
- D how much ice is used to move it



(a)

The _____ you **push** on an object, the **more** the object will be forced to move.

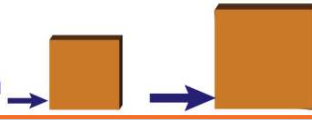
- A easier
- B harder
- C slower
- D lighter



(b)

How difficult or easy it is to **move an object** depends on the object's _____.

- A mass
- B color
- C direction
- D weight



(a)



PREVIEW

Please [Sign In](#) or [Sign Up](#) to download the printable version of this worksheet

- B pressure
- C friction
- D pull

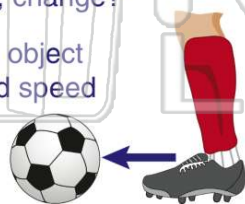


- B more friction
- C little friction
- D the same amount of friction



What can **forces**, such as **pushes**, **pulls**, and **friction**, change?

- A the size of the object
- B the motion and speed of an object
- C the color of an object
- D the mass of an object



(b)

If you were riding your bike **up a large hill**, you would need to apply _____ than if you were riding down a large hill.

- A more force
- B less force
- C the same force
- D a small amount of force



(a)