



Name _____ Class _____ Date _____

1 Most animals living in the world today are **invertebrates**.

- A true
- B false



3 Most kinds of **invertebrates** are _____, such as flies.

- A insects
- B worms
- C jellyfish



2 A _____ is an example of an **invertebrate**.

- A goldfish
- B spider
- C snake
- D salamander



4 **invertebrates** _____ grow as big as vertebrates are able to.

- A often
- B always
- C do not



PREVIEW

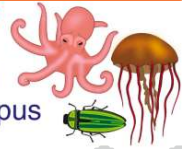
Please [Sign In](#) or [Sign Up](#) to download the printable version of this worksheet

7 _____
A on land
B in the ocean
C in mud
D underground



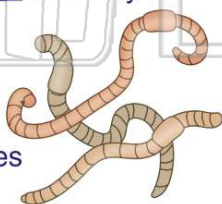
Which is an arthropod?

- A a beetle
- B jellyfish
- C a worm
- D an octopus



9 **Worms** are invertebrates. Worms do **not** _____ and they live underground.

- A breathe
- B like dirt
- C have soft bodies
- D have legs



10 **Mollusks** are invertebrates that have soft bodies. Many mollusks have shells to protect and support their soft bodies. Which is an example of a mollusk?

- A a fish
- B a tadpole
- C a snail
- D a turtle





ANSWER KEY

Most animals living in the world today are **invertebrates**.

- A true
- B false



(a)

A _____ is an example of an **invertebrate**.

- A goldfish
- B spider
- C snake
- D salamander



(b)

Most kinds of **invertebrates** are _____, such as flies.

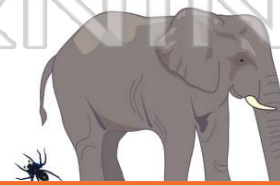
- A insects
- B worms
- C jellyfish
- D mammals



(a)

Invertebrates _____ grow as big as vertebrates are able to.

- A often
- B always
- C do not
- D do



(c)



PREVIEW

Please [Sign In](#) or [Sign Up](#) to download the printable version of this worksheet

- A on land
- B in the ocean
- C in mud
- D underground

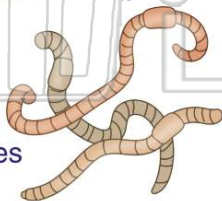


- A a beetle
- B jellyfish
- C a worm
- D an octopus



Worms are invertebrates. Worms do not _____ and they live underground.

- A breathe
- B like dirt
- C have soft bodies
- D have legs



(d)

Mollusks are invertebrates that have soft bodies. Many mollusks have shells to protect and support their soft bodies. Which is an example of a mollusk?

- A a fish
- B a tadpole
- C a snail
- D a turtle



(c)