



Name _____ Class _____ Date _____

1 Some animals lay eggs **outside** the mother's body. The young animal develops _____, and then the eggs hatch when the young are ready to be born.

A inside the egg **C** in one year
B outside the egg **D** under the egg



2 A **butterfly's life cycle** begins as a(n) _____.

A egg
B larva
C pupa
D caterpillar



3 After a butterfly lays an egg, a caterpillar soon hatches from that egg. **A caterpillar is the stage of the butterfly.**

A egg
B larval
C pupa
D caterpillar



4 What does the caterpillar have to do during the **larval stage** in order to survive?

A eat a lot
B starve itself
C sleep a lot
D move a lot



5

PREVIEW

7 Please [Sign In](#) or [Sign Up](#) to download the printable version of this worksheet

A gills.
B fur.
C ears.
D wings and jointed legs.



A many vertebrates have different life cycles
B all vertebrates have the same life cycles
C many invertebrates have different life cycles
D all invertebrates have the same life cycles

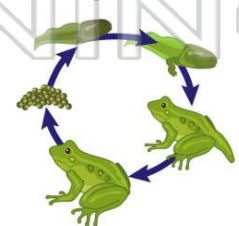
9 **Amphibians** are vertebrates that change a lot during their life cycle.

A true
B false



10 A **frog** has _____ main stages of its life cycle.

A two
B six
C four
D ten





ANSWER KEY

Some animals lay eggs **outside** the mother's body. The young animal develops _____, and then the eggs hatch when the young are ready to be born.

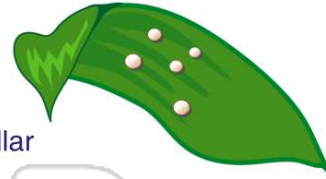


(a)

- A inside the egg
- B outside the egg
- C in one year
- D under the egg

A **butterfly's life cycle** begins as a(n) _____.

- A egg
- B larva
- C pupa
- D caterpillar



(a)

After a butterfly lays an egg, a caterpillar soon hatches from that egg. A **caterpillar** is the _____ stage of the butterfly.



(b)

- A egg
- B larval
- C pupal
- D

What does the caterpillar have to do during the **larval stage** in order to survive?

- A eat a lot
- B starve itself
- C swim
- D lay more eggs



(a)



PREVIEW

Please [Sign In](#) or [Sign Up](#) to download the printable version of this worksheet

- A gills.
- B fur.
- C ears.
- D wings and jointed legs.



- B all vertebrates have the same life cycles
- C many invertebrates have different life cycles
- D all invertebrates have the same life cycles

Amphibians are vertebrates that change a lot during their life cycle.

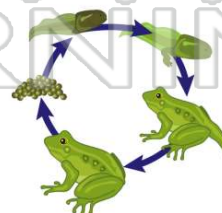
- A true
- B false



(a)

A **frog** has _____ main stages of its life cycle.

- A two
- B six
- C four
- D ten



(c)