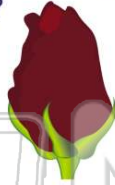




Name _____ Class _____ Date _____

1 What part of a flower looks like **small leaves surrounding the bud of a flower** and protects a developing flower before it blooms?

- A filaments
- B stigmas
- C sepals
- D petals



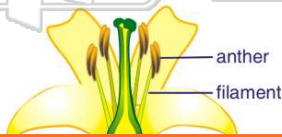
2 What part of the plant **attracts insects** to the flower?

- A the stem
- B the flower petals
- C the roots
- D the leaves



3 The _____ of a flower is made up of two main parts: the **anther** and the **filament**.

- A stamen
- B petals



4 What is the **very thin structure** that holds up the **anther**?

- A stamen
- B petals
- C filament



PREVIEW

Please [Sign In](#) or [Sign Up](#) to download the printable version of this worksheet

7

- A sepal
- B stamen
- C petal
- D pistil

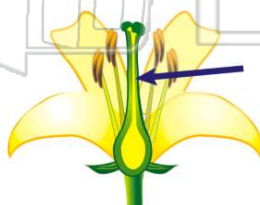


- B stigma
- C anther
- D filament



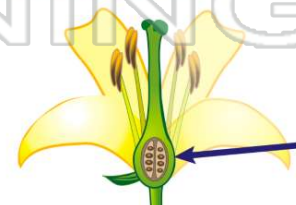
9 What is the **tube-like structure** that holds up the stigma on a flower?

- A style
- B anther
- C stamen
- D filament



10 The _____ of a flower **contains seeds and turns into fruit**.

- A ovary
- B filament
- C style
- D anther





ANSWER KEY

What part of a flower looks like **small leaves surrounding the bud of a flower** and protects a developing flower before it blooms?

- A filaments
- B stigmas
- C sepals
- D petals



(C)

What part of the plant **attracts insects** to the flower?

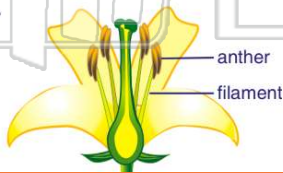
- A the stem
- B the flower petals
- C the roots
- D the leaves



(b)

The _____ of a flower is made up of two main parts: the **anther** and the **filament**.

- A stamen
- B petals
- C ovary
- D style



(a)

What is the **very thin structure** that holds up the **anther**?

- A stamen
- B petals
- C filament
- D style



(C)



PREVIEW

Please [Sign In](#) or [Sign Up](#) to download the printable version of this worksheet

- B stamen
- C petal
- D pistil

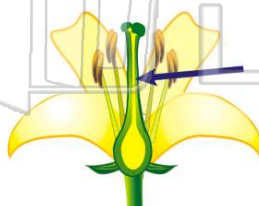


- C anther
- D filament



What is the **tube-like structure** that holds up the stigma on a flower?

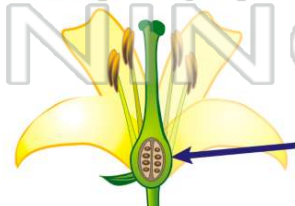
- A style
- B anther
- C stamen
- D filament



(a)

The _____ of a flower **contains seeds and turns into fruit**.

- A ovary
- B filament
- C style
- D anther



(a)