



Name _____ Class _____ Date _____

1 The **stages of development** an organism experiences as it moves from birth to adulthood or maturity is called _____.

- A fertilization
- B preservation
- C its life cycle
- D regeneration



3 Organisms such as mammals and birds have **simple** life cycles; they look **similar to their parents** when they are born. Which of these organisms looks **similar** to its parents when born?



2 All **organisms** have the same **life cycle**.
True or false?

- A true
- B false



4 Many organisms have **complex** life cycles and **do not look like their parents** when they are born. Which of these organisms looks totally **different** from its parents when born?

- A bird
- B horse



5



PREVIEW

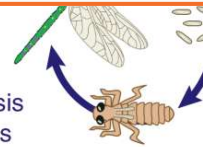
Please [Sign In](#) or [Sign Up](#) to download the printable version of this worksheet

7

- B The eggs are fertilized.
- C The female lays an egg.
- D The organism reaches an adult size.



- metamorphosis
- B complete metamorphosis
- C half metamorphosis
- D no metamorphosis



9 Organisms that go through **complete metamorphosis** go through **four stages** of development. In **order**, these are _____.

- A egg, adult, larva, and nymph
- B pupa, egg, nymph, and adult
- C egg, larva, pupa, and adult
- D nymph, pupa, egg, and adult



10 **Butterflies** go through metamorphosis.

- A complete
- B incomplete
- C half
- D no





ANSWER KEY

The **stages of development** an organism experiences as it moves from birth to adulthood or maturity is called _____.

- A fertilization
- B preservation
- C its life cycle
- D regeneration



(C)

All **organisms** have the same **life cycle**.

True or false?

- A true
- B false



(b)

Organisms such as mammals and birds have **simple** life cycles; they look **similar to their parents** when they are born. Which of these organisms looks **similar** to its parents when born?

- A dog
- C frog



(a)

Many organisms have **complex** life cycles and **do not look like their parents** when they are born. Which of these organisms looks totally **different** from its parents when born?

- A bird
- B horse
- C butterfly



(C)



PREVIEW

Please [Sign In](#) or [Sign Up](#) to download the printable version of this worksheet

- fertilized.
- C The female lays an egg.
- D The organism reaches an adult size.



- B complete metamorphosis
- C half metamorphosis
- D no metamorphosis



Organisms that go through **complete metamorphosis** go through **four stages** of development. In **order**, these are _____.

- A egg, adult, larva, and nymph
- B pupa, egg, nymph, and adult
- C egg, larva, pupa, and adult
- D nymph, pupa, egg, and adult



(C)

Butterflies go through _____ metamorphosis.

- A complete
- B incomplete
- C half
- D no



(a)