



Name _____ Class _____ Date _____

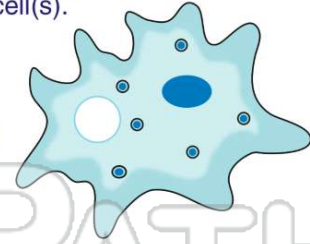
1 **Cells** are the **building blocks** of life. Which sentence supports this statement the best?

- A All cells are large.
- B All living things are made of cells.
- C You need a microscope to see cells.
- D Cells come in different shapes.



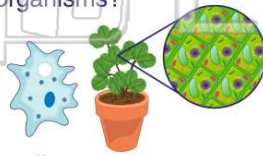
2 A **unicellular organism** is made up of _____ cell(s).

- A one
- B many
- C several
- D three



3 What is the difference between **unicellular** and **multicellular** organisms?

- A the number of cells they have
- B the size of their cells
- C the color of their cells



4 Which do scientists use to **study cells**?

- A a scale
- B a microscope
- C a graduated cylinder
- D a thermometer

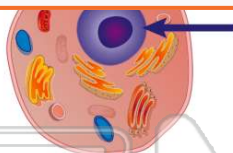


PREVIEW

Please [Sign In](#) or [Sign Up](#) to download the printable version of this worksheet

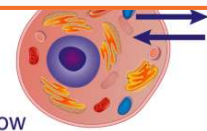
7

B nucleus
C cell membrane
D cytoplasm



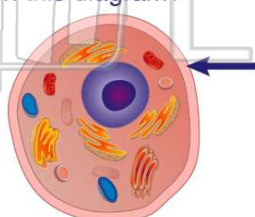
the cell membrane.

A to move the cell
B to feed the cell
C to help the cell grow
D to protect the inside of the cell



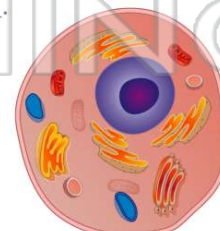
9 What part of the **animal cell** is the arrow pointing to on this diagram?

- A cell membrane
- B nucleus
- C cytoplasm
- D chloroplast



10 Every cell is filled with a **gel-like liquid** called _____.

- A jelly
- B slime
- C chloroplast
- D cytoplasm





ANSWER KEY

Cells are the **building blocks** of life. Which sentence supports this statement the best?

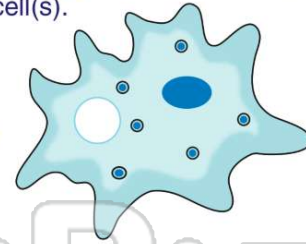
- A** All cells are large.
- B** All living things are made of cells.
- C** You need a microscope to see cells.
- D** Cells come in different shapes.



(b)

A **unicellular organism** is made up of _____ cell(s).

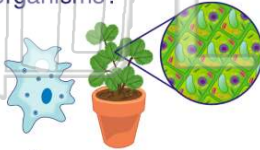
- A** one
- B** many
- C** several
- D** three



(a)

What is the difference between **unicellular** and **multicellular** organisms?

- A** the number of cells they have
- B** the size of their cells
- C** the color of their cells
- D** unicellular organisms do not have



(a)

Which do scientists use to **study cells**?

- A** a scale
- B** a microscope
- C** a graduated cylinder
- D** a thermometer



(b)



PREVIEW

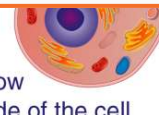
Please [Sign In](#) or [Sign Up](#) to download the printable version of this worksheet

- C** cell membrane
- D** cytoplasm



(a)

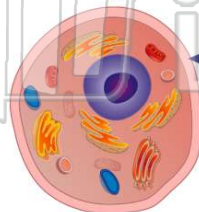
- A** to move the cell
- B** to feed the cell
- C** to help the cell grow
- D** to protect the inside of the cell



(d)

What part of the **animal cell** is the arrow pointing to on this diagram?

- A** cell membrane
- B** nucleus
- C** cytoplasm
- D** chloroplast



Every cell is filled with a **gel-like liquid** called _____.

- A** jelly
- B** slime
- C** chloroplast
- D** cytoplasm

