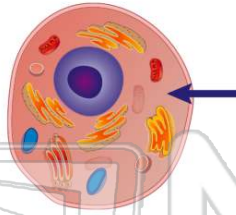




Name _____ Class _____ Date _____

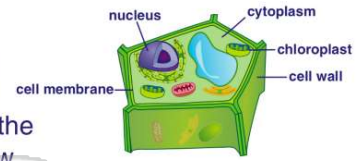
1 What part of the cell is the arrow pointing to on this **animal cell** diagram?

- A nucleus
- B cytoplasm
- C cell membrane
- D chloroplast



2 What is the **main job** of the **cytoplasm** in a cell?

- A to feed the cell
- B to help the cell grow
- C to help the cell move
- D to hold all cell parts in place



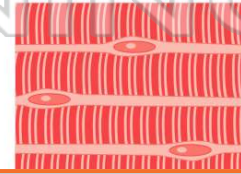
3 Every **cell** has the **same job** in a living organism.
True or false?

- A true
- B false



4 A **group** of one kind of **cell** is a _____.

- A system
- B organ
- C tissue
- D body



PREVIEW

Please [Sign In](#) or [Sign Up](#) to download the printable version of this worksheet

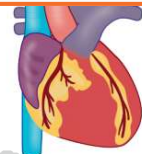
7 A _____ is an example of a _____.

- A a system
- B an organism
- C an organ
- D a vein



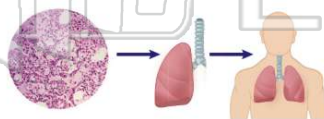
8 A _____ is an example of a _____.

- B a hand
- C a heart
- D a strand of hair



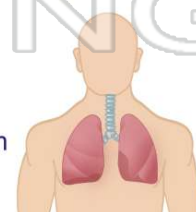
9 What does a **group of organs** working **together** form?

- A a system
- B blood
- C oxygen
- D a tissue



10 The _____ is an example of a **system** in the human body.

- A sleeping system
- B eating system
- C running system
- D respiratory system

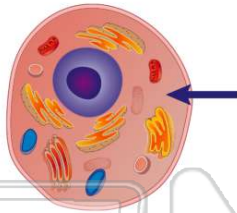




ANSWER KEY

What part of the cell is the arrow pointing to on this **animal cell** diagram?

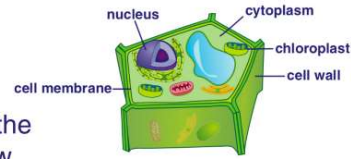
- A nucleus
- B cytoplasm
- C cell membrane
- D chloroplast



(b)

What is the **main job** of the **cytoplasm** in a cell?

- A to feed the cell
- B to help the cell grow
- C to help the cell move
- D to hold all cell-parts in place

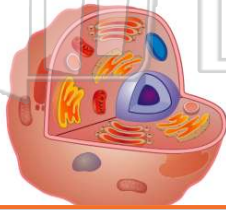


(d)

Every **cell** has the **same job** in a living organism.

True or false?

- A true
- B false



(b)

A **group** of one kind of **cell** is a _____

- A system
- B organ
- C tissue
- D body



(c)



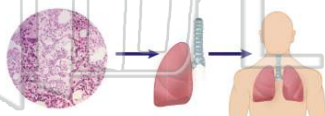
PREVIEW

Please [Sign In](#) or [Sign Up](#) to download the printable version of this worksheet

- A a system
- B an organism
- C an organ
- D a vein

What does a **group of organs** working **together** form?

- A a system
- B blood
- C oxygen
- D a tissue



(a)

- C a heart
- D a strand of hair

The _____ is an example of a **system** in the human body.

- A sleeping system
- B eating system
- C running system
- D respiratory system



(d)