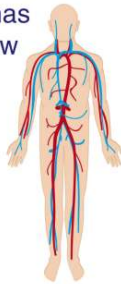




Name _____ Class _____ Date _____


1 Each cell in the human body has a **job** to do. Approximately, how **many cells** make up the average adult human body?

A hundreds of cells
B millions of cells
C billions of cells
D trillions of cells



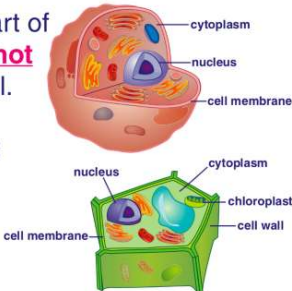
2 Animal and plant cells **both** have a **nucleus** and **cell membrane**. Which of the following supports this statement?

A Animal and plant cells have large parts.
B Animal and plant cells have similar parts.
C Animal and plant cells have different parts.
D Animal and plant cells have small parts.




3 _____ is a part of a **plant cell** but **not** of an **animal cell**.

A A chloroplast
B The cell membrane
C A nucleus
D Cytoplasm



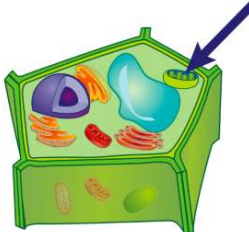
4 **Chloroplasts**, found only in **plant cells**, catch the sun's energy for the plant. Why is it important for a plant to capture the **sun's energy**?

A to grow more roots
B to make its own food
C to reproduce
D to get water



5 The arrow is pointing to the _____ of the **plant cell**.

A cell membrane
B nucleus
C cytoplasm
D chloroplast



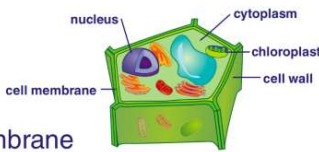
6 Why do animal cells **not** have **chloroplasts**?

A Animals do not make their own food.
B Animals are too fast.
C Animals are too big.
D Animals do not need food.



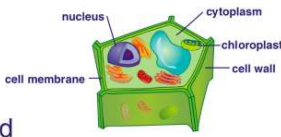
7 **Plant cells** have _____, which animal cells do **not** have.

A cytoplasm
B a nucleus
C a cell wall
D a cell membrane



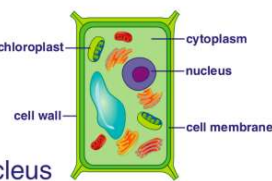
8 What is the main job of a plant's **cell wall**?

A to gather the sun's energy
B to support and protect the cell
C to collect food for the cell
D to help the cell grow larger



9 A plant's **cell wall** is located _____.

A outside cell membrane
B inside the cell membrane
C next to the nucleus
D inside the chloroplast



10 A **microorganism** is an organism that is **too small** to see with our eyes alone. How are scientists able **view** a microorganism?

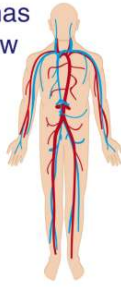
A with a telescope
B with binoculars
C with a magnifying glass
D with a microscope





ANSWER KEY

Each cell in the human body has a **job** to do. Approximately, how **many cells** make up the average adult human body?



- A** hundreds of cells
- B** millions of cells
- C** billions of cells
- D** trillions of cells

(d)

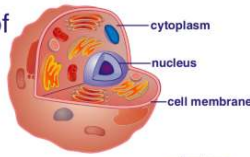
Animal and plant cells **both** have a **nucleus** and **cell membrane**. Which of the following supports this statement?

- A** Animal and plant cells have large parts.
- B** Animal and plant cells have similar parts.
- C** Animal and plant cells have different parts.
- D** Animal and plant cells have small parts.

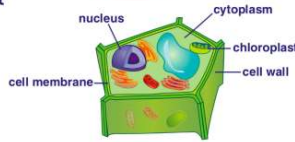


(b)

_____ is a part of a **plant cell** but **not** of an **animal cell**.



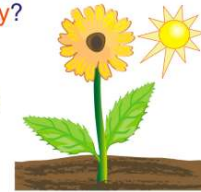
- A** A chloroplast
- B** The cell membrane
- C** A nucleus
- D** Cytoplasm



(a)

Chloroplasts, found only in **plant cells**, catch the sun's energy for the plant. Why is it important for a plant to capture the **sun's energy**?

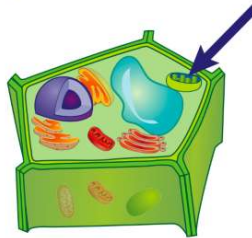
- A** to grow more roots
- B** to make its own food
- C** to reproduce
- D** to get water



(b)

The arrow is pointing to the _____ of the **plant cell**.

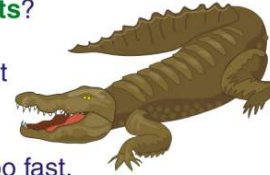
- A** cell membrane
- B** nucleus
- C** cytoplasm
- D** chloroplast



(d)

Why do animal cells **not** have **chloroplasts**?

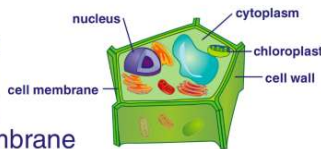
- A** Animals do not make their own food.
- B** Animals are too fast.
- C** Animals are too big.
- D** Animals do not need food.



(a)

Plant cells have _____, which animal cells do **not** have.

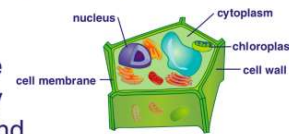
- A** cytoplasm
- B** a nucleus
- C** a cell wall
- D** a cell membrane



(c)

What is the main job of a plant's **cell wall**?

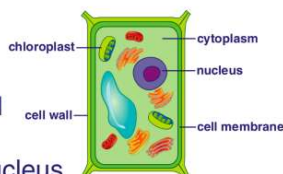
- A** to gather the sun's energy
- B** to support and protect the cell
- C** to collect food for the cell
- D** to help the cell grow larger



(b)

A plant's **cell wall** is located _____.

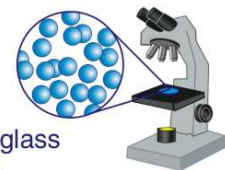
- A** outside cell membrane
- B** inside the cell membrane
- C** next to the nucleus
- D** inside the chloroplast



(a)

A **microorganism** is an organism that is **too small** to see with our eyes alone. How are scientists able **view** a microorganism?

- A** with a telescope
- B** with binoculars
- C** with a magnifying glass
- D** with a microscope



(d)