



Name \_\_\_\_\_ Class \_\_\_\_\_ Date \_\_\_\_\_

1 In a **parallel circuit**, if one bulb goes out, what happens to the other bulb?

- A the other bulb will go out
- B the other bulb will shatter
- C the other bulb will stay lit
- D the other bulb would become dimmer



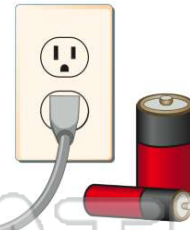
3 An electric current that **reverses its direction at regular intervals** is called **AC**, or \_\_\_\_\_

- A Accidental Current
- B Direct Current
- C Alternating Current



2 What are the **two main types of current**?

- A CC and DD
- B AC and DC
- C AD and CD
- D AA and CC



4 Electric current **flowing in one direction** is called **DC**, or \_\_\_\_\_

- A Dissecting Current
- B Diagonal Current
- C Alternating Current
- D Direct Current



## PREVIEW

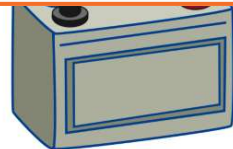
Please [Sign In](#) or [Sign Up](#) to download the printable version of this worksheet

7 **B** its contents can be spilled  
**C** its contents are frozen  
**D** its contents cannot be spilled



10 What device allows electricity to be **transmitted** over long distances at a **fast rate of speed**?

- A big cell battery
- B small cell battery
- C dry cell battery
- D wet cell battery

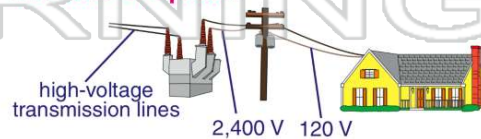


9 A \_\_\_\_\_ is a **safety device** that has a metal wire which melts and **stops the electrical current from flowing** through the circuit when the current becomes too strong.

- A switch
- B fuse
- C wire
- D circuit



10 What device allows electricity to be **transmitted** over long distances at a **fast rate of speed**?



- A fuse
- B circuit
- C transformer
- D outlet



## ANSWER KEY

In a **parallel circuit**, if one bulb goes out, what happens to the other bulb?

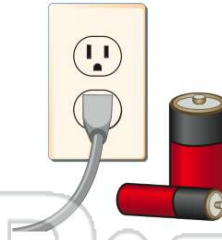
- A the other bulb will go out
- B the other bulb will shatter
- C the other bulb will stay lit
- D the other bulb would become dimmer



(C)

What are the **two main types of current**?

- A CC and DD
- B AC and DC
- C AD and CD
- D AA and CC



(b)

An electric current that **reverses its direction at regular intervals** is called **AC**, or \_\_\_\_\_.

- A Accidental Current
- B Direct Current
- C Alternating Current
- D A Current



(C)

Electric current **flowing in one direction** is called **DC**, or \_\_\_\_\_.

- A Dissecting Current
- B Diagonal Current
- C Alternating Current
- D Direct Current



(d)



## PREVIEW

Please [Sign In](#) or [Sign Up](#) to download the printable version of this worksheet

- A be spilled
- B its contents are frozen
- C its contents cannot be spilled
- D its contents are frozen



- A small cell battery
- B dry cell battery
- C wet cell battery
- D small cell battery



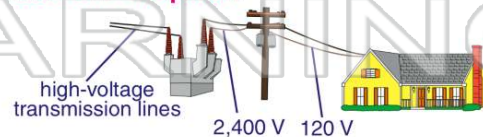
A \_\_\_\_\_ is a **safety device** that has a metal wire which melts and **stops the electrical current from flowing** through the circuit when the current becomes too strong.

- A switch
- B fuse
- C wire
- D circuit



(b)

What device allows electricity to be **transmitted** over long distances at a **fast rate of speed**?



(c)

- A fuse
- B circuit
- C transformer
- D outlet