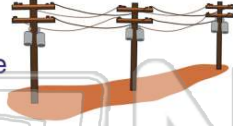




Name \_\_\_\_\_ Class \_\_\_\_\_ Date \_\_\_\_\_

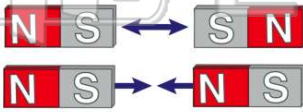
1 A **transformer** can change high voltage electricity into lower voltage electricity. Why does electricity need to be changed to a **lower voltage**?

- A so it is cheaper
- B so it is safer to use
- C so it is hot
- D so it is dangerous



3 What does the following picture show you about **magnetic poles** on magnets?

- A like poles are neutral
- B like poles attract each other



5

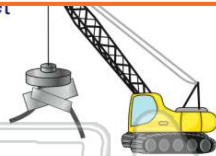


## PREVIEW

Please [Sign In](#) or [Sign Up](#) to download the printable version of this worksheet

7

- A permanent magnet
- B flexible magnet
- C electromagnet
- D compass magnet



9

What is one way to make an **electromagnet stronger**?

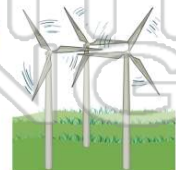
- A tighten coils
- B loosen coils
- C decrease the number of coils
- D increase the number of coils



10

**Turbines** moved by **wind, water, or steam** are used to **turn** \_\_\_\_\_.

- A electrical energy into chemical energy
- B mechanical energy into electrical energy
- C electrical energy into moving energy
- D current energy into direct energy



2

**Magnetism** is the property of attracting or repelling certain kinds of materials. What is the **area around a magnet** called?

- A magnetic field
- B magnetic space
- C magnetic ground
- D magnetic gap



4

\_\_\_\_\_ acts as a **large magnet**, with its **magnetic fields being strongest at its poles**, which are **not** exactly at the North and South Pole.

- A The moon
- B Earth



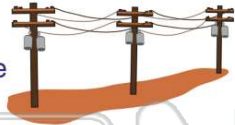


## ANSWER KEY

A **transformer** can change high voltage electricity into lower voltage electricity.

Why does electricity need to be changed to a **lower voltage**?

- A so it is cheaper
- B so it is safer to use
- C so it is hot
- D so it is dangerous



(b)

**Magnetism** is the property of attracting or repelling certain kinds of materials.

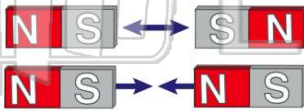
What is the **area around a magnet** called?

- A magnetic field
- B magnetic space
- C magnetic ground
- D magnetic gap



(a)

What does the following picture show you about **magnetic poles** on magnets?



- A like poles are neutral
- B like poles attract each other
- C like poles repel each other
- D

(c)

**Earth** acts as a large magnet, with its magnetic fields being strongest at its poles, which are not exactly at the North and South Pole.

- A The moon
- B Earth
- C The sun



(b)



## PREVIEW

Please [Sign In](#) or [Sign Up](#) to download the printable version of this worksheet

- C electromagnet
- D compass magnet



- C coil of clay
- D coil of rubber



What is one way to make an **electromagnet stronger**?

- A tighten coils
- B loosen coils
- C decrease the number of coils
- D increase the number of coils



(d)

**Turbines** moved by wind, water, or steam are used to turn \_\_\_\_\_.

- A electrical energy into chemical energy
- B mechanical energy into electrical energy
- C electrical energy into moving energy
- D current energy into direct energy



(b)