



Name _____ Class _____ Date _____

1 Animals have particular **body parts** and structures which help them **survive**; for example, tigers have **sharp teeth** in order to _____.

- A eat the meat of other animals
- B drink water
- C run fast
- D see well at night



2 Animals **need** certain things from their environment **in order to** live such as water, food, shelter, and _____.

- A trees
- B soil
- C oxygen
- D rocks



3 Ducks have **webbed feet** that help them **swim**. This sentence supports which of these statements?

- A Animals like water.
- B Animals need to drink water.
- C Animals have body parts



4 Scientists classify animals into **two major groups**, _____.

- A large and small animals
- B mammals and insects
- C warm-blooded and cold-blooded



PREVIEW

Please [Sign In](#) or [Sign Up](#) to download the printable version of this worksheet

7
A
B invertebrates
C mammals
D land-dwelling animals



- A true
- B false



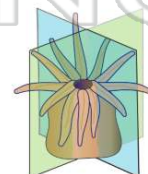
9 Organisms in the animal kingdom with **symmetry** exhibit either **radial symmetry** or _____.

- A color symmetry
- B side symmetry
- C round symmetry
- D bilateral symmetry



10 When a line can be drawn across an organism in **any way**, and divides it into **two equal parts**, this is called _____.

- A radial symmetry
- B bilateral symmetry
- C color symmetry
- D shape symmetry





ANSWER KEY

Animals have particular **body parts** and structures which help them **survive**; for example, tigers have **sharp teeth** in order to _____.

- A eat the meat of other animals
- B drink water
- C run fast
- D see well at night



(a)

Animals **need** certain things from their environment **in order to** live such as water, food, shelter, and _____.

- A trees
- B soil
- C oxygen
- D rocks



(c)

Ducks have **webbed feet** that help them **swim**. This sentence supports which of these statements?

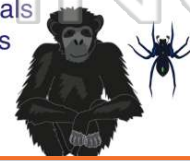
- A Animals like water.
- B Animals need to drink water.
- C Animals have body parts that help them move.



(c)

Scientists classify animals into **two major groups**, _____.

- A large and small animals
- B mammals and insects
- C warm-blooded and cold-blooded
- D vertebrates and



(d)



PREVIEW

Please [Sign In](#) or [Sign Up](#) to download the printable version of this worksheet

- D land-dwelling animals



D false



Organisms in the animal kingdom with **symmetry** exhibit either **radial symmetry** or _____.

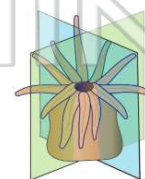
- A color symmetry
- B side symmetry
- C round symmetry
- D bilateral symmetry



(d)

When a line can be drawn across an organism in **any way**, and divides it into **two equal parts**, this is called _____.

- A radial symmetry
- B bilateral symmetry
- C color symmetry
- D shape symmetry



(a)