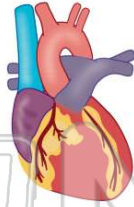




Name _____ Class _____ Date _____

1 Amy's heart beats on average **70 times per minute**. How many times will her heart beat in **30 minutes**?

- A 2,100 minutes
- B 2,001 minutes
- C 210 minutes
- D 1,200 minutes



2 Two scientists found three different fossils at three different times. One fossil was found in **1942**, one was found in **1953**, and the third fossil was found in **1956**. Which fossil is the **oldest**?

- A the one found in 1942
- B the one found in 1953
- C the one found in 1956
- D cannot know from information given



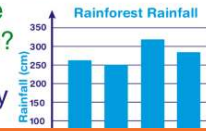
3 In the desert the temperature during the day was **43°C** and at night the temperature dropped to **18°C**. How much did the temperature **decrease** from day to night?

- A 2°C
- B 5°C



4 Harry made a bar graph showing the amount of rainfall that fell in the rainforest in Brazil. Which two months had the **most rainfall** during the months of January–April?

- A January and February
- B March and April



5



PREVIEW

Please [Sign In](#) or [Sign Up](#) to download the printable version of this worksheet

7

- A 35,000 years
- B 32,500 years
- C 32,000 years
- D 35,200 years



- A increases by 1.0
- B decreases by 1.0
- C increases by 0.1
- D decreases by 0.1

Alaska Earthquakes of the 1980s

Year	Approximate Magnitude
1988	7.8
1987	7.9
1986	8.0

9

Justin placed an ice cube on his desk at **1:15 p.m.** By **1:47 p.m.** the ice cube had melted completely. How many minutes did it take for the ice cube to melt?

- A 23 minutes
- B 32 minutes
- C 42 minutes
- D 33 minutes



10

Three quarters of earth is covered by water. What **percentage** of the earth is then covered by water?

- A 25%
- B 50%
- C 75%
- D 10%

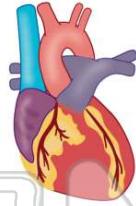




ANSWER KEY

Amy's heart beats on average **70 times per minute**. How many times will her heart beat in **30 minutes**?

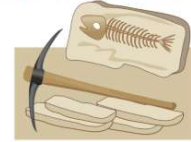
- A 2,100 minutes
- B 2,001 minutes
- C 210 minutes
- D 1,200 minutes



(a)

Two scientists found three different fossils at three different times. One fossil was found in **1942**, one was found in **1953**, and the third fossil was found in **1956**. Which fossil is the **oldest**?

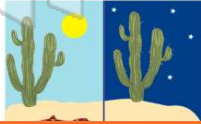
- A the one found in 1942
- B the one found in 1953
- C the one found in 1956
- D cannot know from information given



(d)

In the desert the temperature during the day was **43°C** and at night the temperature dropped to **18°C**. How much did the temperature decrease from day to night?

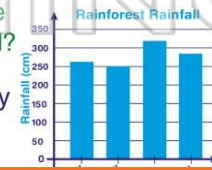
- A 2°C
- B 5°C
- C 25°C
- D



(c)

Harry made a bar graph showing the amount of rainfall that fell in the rainforest in Brazil. Which two months had the **most rainfall** during the months of January–April?

- A January and February
- B March and April
- C January and April



(b)



PREVIEW

Please [Sign In](#) or [Sign Up](#) to download the printable version of this worksheet

- A 33,000 years
- B 32,500 years
- C 32,000 years
- D 35,200 years



A

B

- B decreases by 1.0
- C increases by 0.1
- D decreases by 0.1

1988	7.8
1987	7.9
1986	8.0

Justin placed an ice cube on his desk at **1:15 p.m.** By **1:47 p.m.** the ice cube had melted completely. How many minutes did it take for the ice cube to melt?

- A 23 minutes
- B 32 minutes
- C 42 minutes
- D 33 minutes



(b)

Three quarters of earth is covered by water. What **percentage** of the earth is then covered by water?

- A 25%
- B 50%
- C 75%
- D 10%



(c)