



Name \_\_\_\_\_ Class \_\_\_\_\_ Date \_\_\_\_\_

1 The **human skeletal system** is made up of \_\_\_\_\_ that **support** your entire body.

- A bones
- B skin
- C muscles
- D ligaments



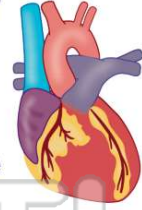
3 The human **skeletal system** is made up of \_\_\_\_\_ **bones** that are of all different shapes and sizes.

- A 20
- C 26



2 What is one important function the **skeletal system** performs for vital organs such as the **heart**?

- A helps the organs work
- B produces oxygen
- C provides protection
- D releases carbon dioxide



4 Your \_\_\_\_\_ is made up of **muscles** that are attached to your skeletal system. Your muscles **help you move** all your body parts.

- A excretory system
- B respiratory system



5



## PREVIEW

Please [Sign In](#) or [Sign Up](#) to download the printable version of this worksheet

7

- A skeletal
- B tiny
- C cardiac
- D respiratory



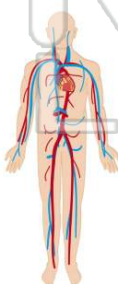
- A respiratory system
- B circulatory system
- C muscular system
- D nervous system



9

The main function of your **circulatory system** is to pump blood from the heart to **all parts** of your **body**. \_\_\_\_\_ carries important nutrients throughout your body and gets rid of waste.

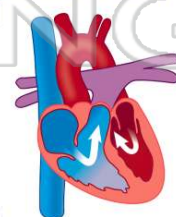
- A Blood
- B Oxygen
- C Muscles
- D Bones



10

The **right side** of your heart collects blood **filled with carbon dioxide** from your body. This blood gets pumped to your \_\_\_\_\_, where the carbon dioxide is exhaled (breathed out) of your body.

- A brain
- B lungs
- C liver
- D mouth





## ANSWER KEY

The **human skeletal system** is made up of \_\_\_\_\_ that **support** your entire body.

- A** bones
- B** skin
- C** muscles
- D** ligaments



(a)

What is one important function the **skeletal system** performs for vital organs such as the **heart**?

- A** helps the organs work
- B** produces oxygen
- C** provides protection
- D** releases carbon dioxide



(c)

The human **skeletal system** is made up of \_\_\_\_\_ **bones** that are of all different shapes and sizes.

- A** 20
- B** 206
- C** 26
- D** 602



(b)

Your \_\_\_\_\_ is made up of **muscles** that are attached to your skeletal system. Your muscles **help you move** all your body parts.

- A** excretory system
- B** respiratory system
- C** skeletal system



(d)



## PREVIEW

Please [Sign In](#) or [Sign Up](#) to download the printable version of this worksheet

- C** cardiac
- D** respiratory

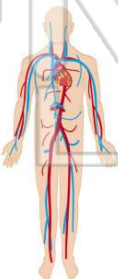


- C** muscular system
- D** nervous system



The main function of your **circulatory system** is to pump blood from the heart to **all parts** of your **body**. \_\_\_\_\_ carries important nutrients throughout your body and gets rid of waste.

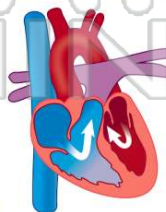
- A** Blood
- B** Oxygen
- C** Muscles
- D** Bones



(a)

The **right side** of your heart collects blood **filled with carbon dioxide** from your body. This blood gets pumped to your \_\_\_\_\_, where the carbon dioxide is exhaled (breathed out) of your body.

- A** brain
- B** lungs
- C** liver
- D** mouth



(b)