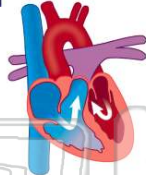




Name _____ Class _____ Date _____

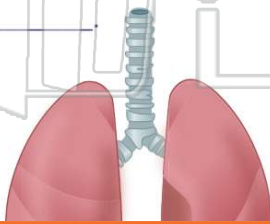
1 When the **left side** of your heart collects blood from your lungs and pumps it throughout your body, what has been **breathed into** that blood through your lungs?

- A oxygen
- B nerves
- C water
- D carbon dioxide



3 **Respiration** = _____

- A pumping
- B listening
- C breathing
- D changing



2 The main function of the _____ is to **supply** our bodies with **oxygen**, which we need in order to survive, and to **let out** carbon dioxide.

- A respiratory system
- B excretory system
- C muscular system
- D nervous system



4 Your **respiratory system** is made up of a **trachea**, **bronchial tubes**, a **diaphragm**, and what two important **organs**?

- A heart and kidney
- B brain and stomach



5



PREVIEW

Please [Sign In](#) or [Sign Up](#) to download the printable version of this worksheet

7

- A circulation
- B processing
- C salivating
- D digestion

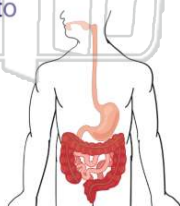


- B in the esophagus
- C in the small intestines
- D in the large intestines

9

Food that is **swallowed** goes through your _____ where the muscles push the food **down** to the **stomach**.

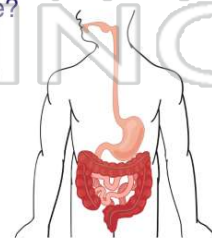
- A intestines
- B esophagus
- C trachea
- D lungs



10

Where does **most** of the **digestion process** take place?

- A small intestines
- B large intestines
- C stomach
- D liver

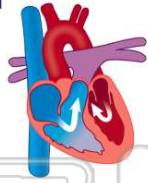




ANSWER KEY

When the **left side** of your heart collects blood from your lungs and pumps it throughout your body, what has been **breathed into** that blood through your lungs?

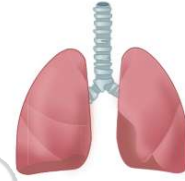
- A oxygen
- B nerves
- C water
- D carbon dioxide



(a)

The main function of the _____ is to **supply** our bodies with **oxygen**, which we need in order to survive, and to **let out carbon dioxide**.

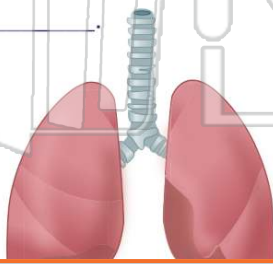
- A respiratory system
- B excretory system
- C muscular system
- D nervous system



(a)

Respiration

- A pumping
- B listening
- C breathing
- D changing



(c)

Your **respiratory system** is made up of a **trachea**, **bronchial tubes**, a **diaphragm**, and what two important **organs**?

- A heart and kidney
- B brain and stomach
- C right lung and left lung



(c)

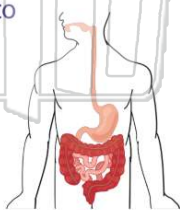


PREVIEW

Please [Sign In](#) or [Sign Up](#) to download the printable version of this worksheet

Food that is **swallowed** goes through your _____ where the muscles push the food **down** to the **stomach**.

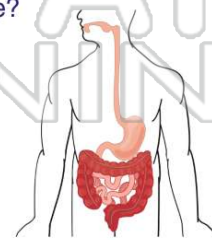
- A intestines
- B esophagus
- C trachea
- D lungs



(b)

Where does **most** of the **digestion process** take place?

- A small intestines
- B large intestines
- C stomach
- D liver



(a)